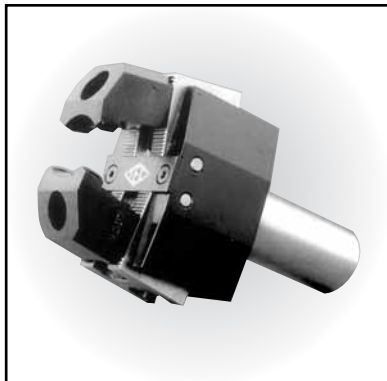


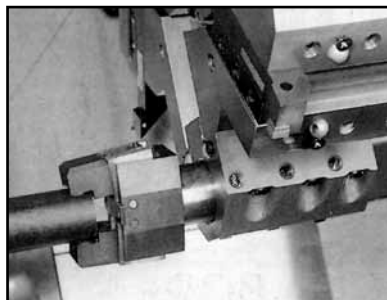
# Powerpull Bar Puller



The Powerpull Bar Puller is for use on CNC or Automatic Lathes with an interchangeable tool turret. It is designed to pull bar stock and tubes into position for machining purposes, thus giving the ability for unmanned operation, without the expense and room needed with a bar feeder.

The Powerpull is a two-jaw lever chuck with variable tensioning jaws which cater to most types of material. It comes in two body sizes each with two sizes of jaws. This easy to set Bar Puller has adjustable gripping pressure and comes with a choice of standard or VDI Shanks. Special jaws can be designed and manufactured to suit unusual applications.

- TWO BODY SIZES • BAR CAPACITY 6-90mm
- ADJUSTABLE GRIPPING PRESSURE • STRONG CONSTRUCTION
- UNIT COMES WITH TWO SIZES OF JAWS PLUS CHOICE OF STANDARD SHANK SIZE

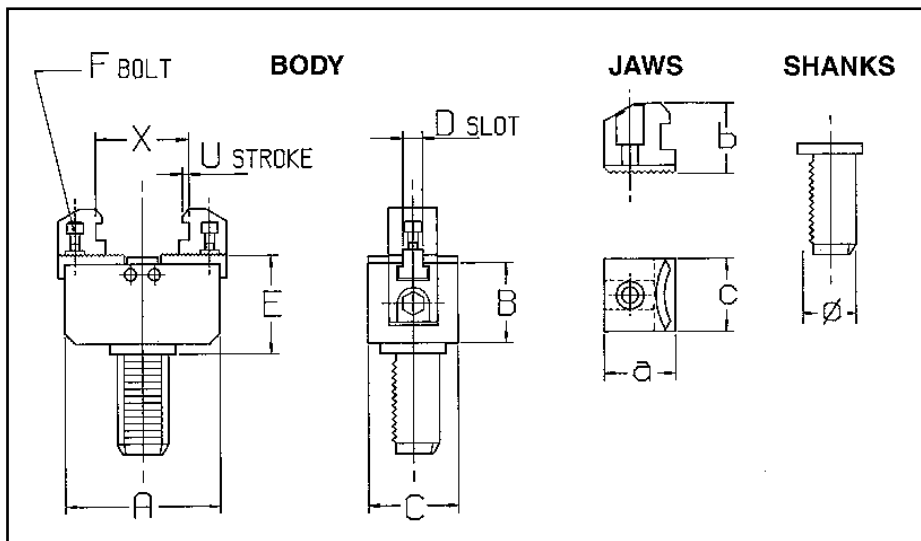


**POWERPULL ON TURRET  
PULLING BAR INTO POSITION**

## TECHNICAL DATA

### Operating Description

The bar stock is initially fed by hand through the machine's hollow spindle to a fixed stop, the bar is then clamped by the spindle-mounted chuck or collet and machining sequence completed. The 'POWERPULL' mounted in the turret is brought towards the headstock and the jaws of the 'POWERPULL' are forced over the bar clamped in the spindle chuck. The spindle chuck is then unclamped and the spring gripping jaws of the 'POWERPULL' grip the bar stock, enabling a positive bar drag out to a predetermined stop position. Spindle chuck is then re-operated to clamp bar and the turret is withdrawn further to release gripping jaws. The bar is then ready for the machining process to be repeated.



Order No.			Device Type	BODY DATA							JAW DATA				PLAIN SHANKS		VDI SHANKS	CLAMPING FORCE	
Inch	Metric	VDI		A	A	C	D	E	F	U	a	b	c	x	inch	metric		min.	max.
ER041250	ER0432	ER04V30	ER04	85	49	50	11	52	M8	2.5	30	38	29	6-36	1-1/4"	32mm	30 dia.	130	170
ER041500	ER0440	ER04V40									23	38	29	35-64	1-1/2"	40mm			
ER042000	ER0450	ER04V50												2"	50mm				
ER061250	ER0632	ER06V30	ER06	120	60	60	14	65	M12	3	39	38	32	6-60	1-1/4"	32mm	30 dia.	200	270
ER061500	ER0640	ER06V40									32	38	32	50-90	1-1/2"	40mm			
ER062000	ER0650	ER06V50												2"	50mm				