

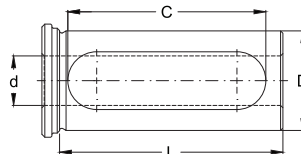
Leading the Way... In 21st Century CNC Tooling Technology!

**NEW
LOWER PRICES**

TAKE 20% OFF Listed Price

C Type Bushings

- Designed with a long slot for direct tool clamping for the positive alignment of the tool cutting edge.
- Can be used for a variety of set screw configurations.
- Precision ground after heat treating for maximum concentricity.



BUSH O.D. (D)	1"	1-1/4"	1-1/2"	2"
LENGTH OF SLOT (C)	2-3/8"	2-3/4"	3"	3-5/8"
LENGTH UNDER HEAD (L)	2-3/4"	3-1/4"	3-3/8"	4"

LIST PRICE	\$35.00	\$39.00	\$45.00	\$55.00
BUSH ID (INCH) (d)	Part No.	Part No.	Part No.	Part No.
1/4"	155-025			
5/16"	155-027			
3/8"	155-029	155-055	155-085	
1/2"	155-031	155-057	155-087	155-145
5/8"	155-033	155-059	155-089	155-147
3/4"	155-035	155-061	155-091	155-149
7/8"		155-063	155-093	155-151
1"		155-065	155-095	155-153
1-1/4"			155-097	155-155
1-1/2"				155-157
1-3/4"				155-159

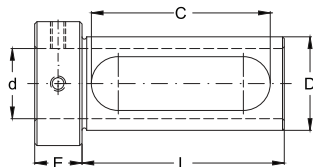
LIST PRICE	\$45.00	\$49.00	\$55.00	\$65.00
BUSH ID (METRIC) (d)	Part No.	Part No.	Part No.	Part No.
6MM				
8MM	155-040			
10MM	155-042	155-070	155-100	
12MM	155-044	155-072	155-102	155-165
16MM	155-046	155-074	155-104	155-167
20MM	155-048	155-076	155-106	155-169
25MM		155-078	155-108	155-171
32MM			155-110	155-173
40MM				155-175
45MM				155-177

PRECISION LATHE TOOL HOLDER BUSHINGS

We will make SPECIALS. Metric O.D and Inch or Metric I.D.

Z Type Bushings

- Designed with a long slot and four set screws in the bushing head.
- Provide improved rigidity and reduced chatter.
- Precision ground after heat treating for maximum concentricity.



BUSH O.D. (D)	1-1/4"	1-1/2"	2"
LENGTH OF SLOT (C)	2-5/8"	2-7/8"	3-1/2"
LENGTH UNDER HEAD (L)	3"	3-1/4"	3-3/4"
HEAD THICKNESS (E)	5/8"	3/4"	3/4"

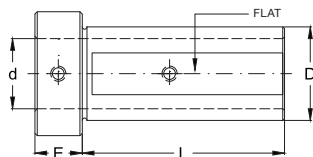
LIST PRICE	\$43.75	\$53.50	\$84.00
BUSH ID (INCH) (d)	Part No.	Part No.	Part No.
1/4"			
5/16"			
3/8"	158-055	158-085	
1/2"	158-057	158-087	158-145
5/8"	158-059	158-089	158-147
3/4"	158-061	158-091	158-149
1"	158-065	158-095	158-153
1-1/4"		158-097	158-155
1-1/2"			158-157

LIST PRICE	\$53.75	\$63.50	\$94.00
BUSH ID (METRIC) (d)	Part No.	Part No.	Part No.
6MM			
8MM			
10MM	158-070	158-100	
12MM	158-072	158-102	158-165
16MM	158-074	158-104	158-167
20MM	158-076	158-106	158-169
25MM	158-078	158-108	158-171
32MM		158-110	158-173
40MM			158-175
45MM			158-177

We will make SPECIALS. Metric O.D and Inch or Metric I.D.

LBF Style Bushings

- For use on Okuma CNC lathes.
- Designed with a flat for clamping the bushing and two set screws for clamping your selected tool inside the bore.
- Two clearance notches for coolant nozzles.
- Precision ground after heat treating for maximum concentricity



BUSH O.D. (D)	1-1/2"
LENGTH UNDER HEAD (L)	3-3/32"
HEAD THICKNESS (E)	5/8"

LIST PRICE	\$58.00
BUSH ID (INCH) (d)	Part No.
3/8"	161-085
1/2"	161-087
5/8"	161-089
3/4"	161-091
1"	161-095
1-1/4"	161-097

We will make SPECIALS. Metric O.D and Inch or Metric I.D.

Distributed By:

- * SUGGESTED LIST PRICES SHOWN
- * PRICES IN US DOLLARS
- * FOB: OUR WAREHOUSE, ORCHARD PARK, NY USA
- * TERMS: N30 DAYS FOR APPROVED ACCOUNTS