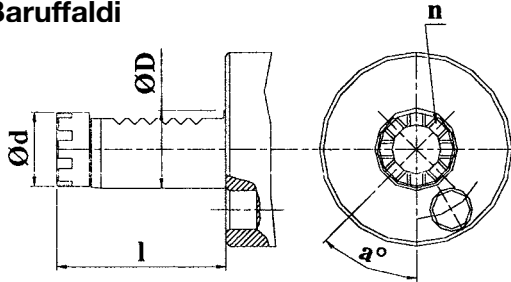


Coupling for VDI Driven Tools

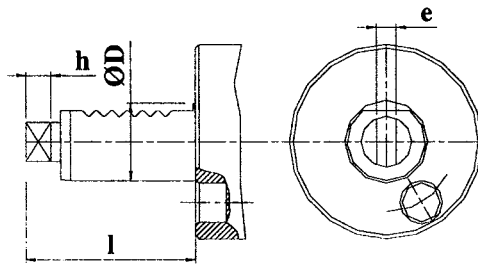
DIN 69880

Baruffaldi



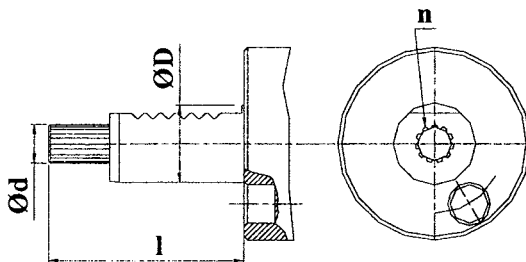
$\frac{\text{ØD}}{\text{(mm)}}$	20	25	30	40	50			
1 (mm)	44	51	59	68	84			
Ød(mm)	19	24	24	32	40			
n (mm)	6	6	6	8	8			
a°	60	60	60	45	45			
Code	...25	...26	...27	...28	...29			

Din 1809



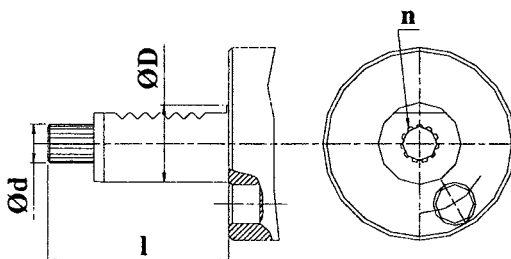
$\frac{\text{ØD}}{\text{(mm)}}$	20	25	30	40	50	60		
1	48	57	62	72	92	110		
Ød(mm)	10	12	12	18	24	29		
e (mm)	5	6	6	8	12	14		
h (mm)	6.5	7	7	6.5	13	14		
Code	...16	...17	...18	...19	...20	...21		

Sauter (Din 5482)



$\frac{\text{ØD}}{\text{(mm)}}$	16	20	30	40	50	60	80	
1 (mm)	44	51	55	63	93	108	144	
Ød(mm)	15.5	9.84	14.5	16.5	19.5	24.5	27.5	
n (mm)	13	11	8	9	12	14	15	
Code	...01	...02	...06	...09	...11	...13	...15	

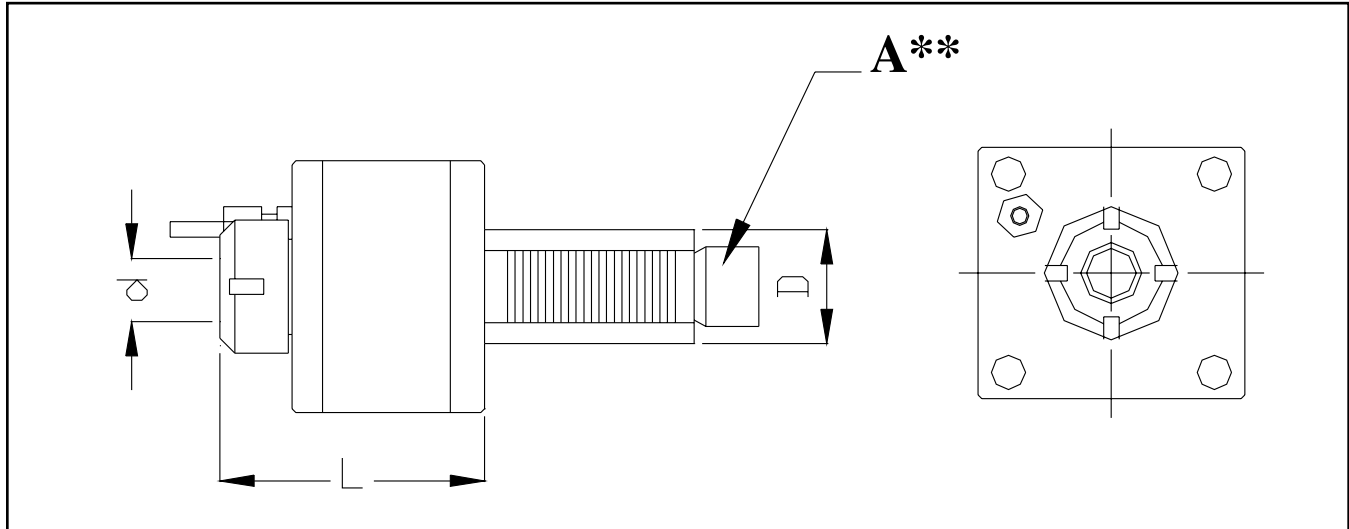
Sauter (Din 5480)



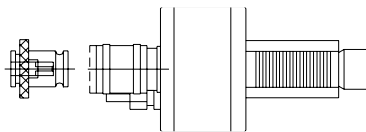
$\frac{\text{ØD}}{\text{(mm)}}$	16	20	25	30	40	50	60	80
1 (mm)	39	47	57	67	75	93	109	139
Ød(mm)	8	10	14	16	20	24	30	30
n (mm)	8	11	16	18	24	18	22	22
Code	...49	...50	...51	...52	...53	...54	...55	...56

Axial VDI Drilling & Milling Heads

DIN 69880



ORDER NO.	D(mm)	d Collet Style	L(mm)	RPM Max	Ratio	Nm	Kg.
TE16A07....	16	ECX/ER11	82	6000	1:1	15	1.1
TE20A10...	20	ECX/ER16	82	6000	1:1	15	1.1
TE30A13...	30	ECX/ER20	100	6000	1:1	25	2.8
TE40A20...	40	ECX/ER32	110	6000	1:1	60	4.0
TE50A20...	50	ECX/ER32	110	6000	1:1	80	4.8
TE50A26...	50	ECX/ER40	123	4500	1:1	80	4.9



**TAPPING HEAD (BILZ)
- ON REQUEST**

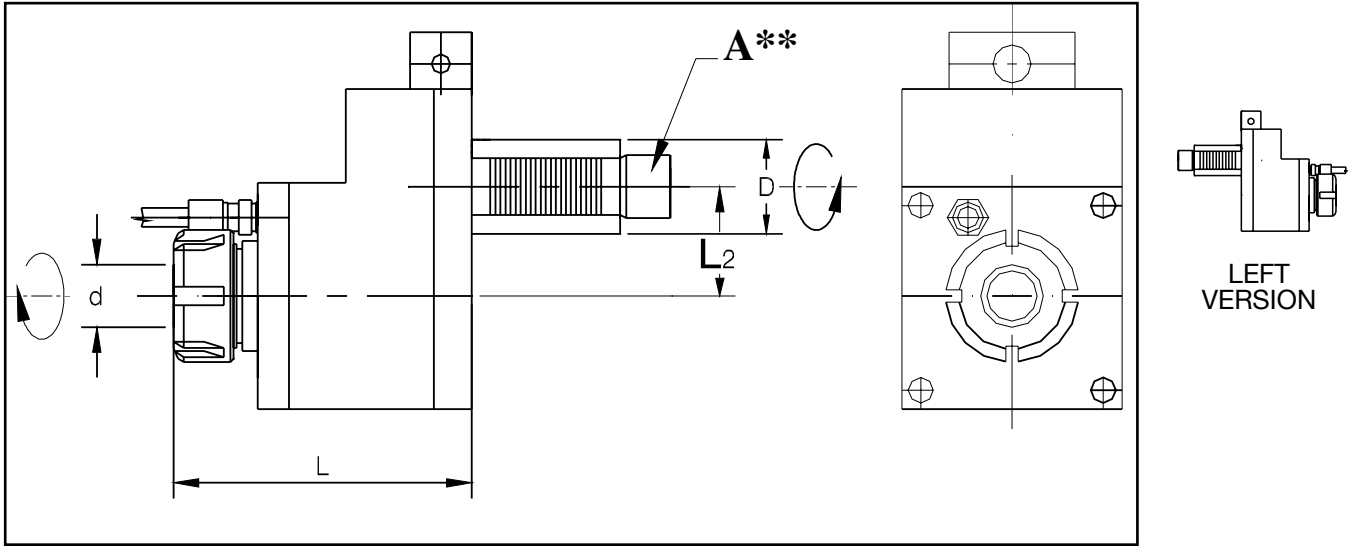
A** D (mm)	Baruffaldi	Din 1809	Sauter Din 5482	Sauter Din 5480
16	—	—	...01	...49
20	...25	...17	...02	...50
30	...27	...18	...06	...52
40	...28	...19	...09	...53
50	...29	...20	...11	...54

Example:

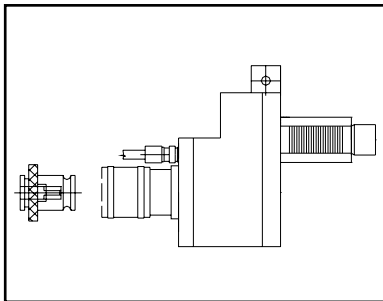
d = ECX/ER32
 D = 40
 A** = SAUTER DIN 5482
 ORDER NO. = TE40A2009

Axial Offset VDI Drilling & Milling Heads

DIN 69880



ORDER NO.	Dh6	d	L2	L	n. Max	Ratio	Nm	Kg.
TE16F07...	16	ECX/ER11	32	70	6000	1:1	15	1.1
TE30F13...	30	ECX/ER20	44	110	6000	1:1	25	3.5
TE40F20...	40	ECX/ER32	50	120	6000	1:1	50	4.5
TE50F20...	50	ECX/ER32	50	120	4500	1:1	50	7.8



TAPPING HEAD (BILZ)
- ON REQUEST

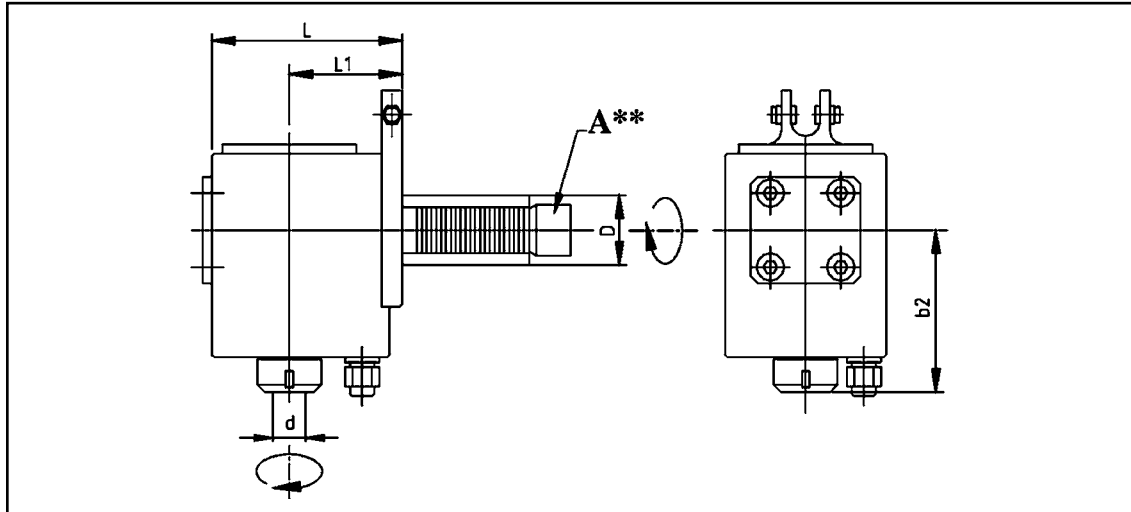
A** / D (mm)	Baruffaldi	Din 1809	Sauter Din 5482	Sauter Din 5480
16	-	-	...01	...49
20	...25	...17	...02	...50
30	...27	...18	...06	...52
40	...28	...19	...09	...53
50	...29	...20	...11	...54

Example:

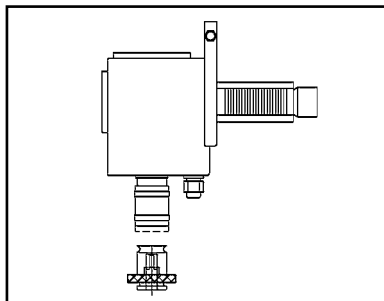
d = ECX/ER32
D = 40
A** = SAUTER DIN 5482
ORDER NO. = TE40F2009

Radial VDI Drilling & Milling Heads

DIN 69880



ORDER NO.	D (mm)	d	L (mm)	L1 (mm)	b2 (mm)	RPM Max	Ratio	Nm	Kg.
TE30B13...	30	ECX/ER20	102	53	90	6000	1:1	25	3.8
TE40B20...	40	ECX/ER32	109	64	98	6000	1:1	50	6.0
TE50B20...	50	ECX/ER32	109	64	98	6000	1:1	50	6.8
TE50B26...	50	ECX/ER40	109	64	100	4500	1:1	50	7.0



TAPPING HEAD (BILZ)
- ON REQUEST

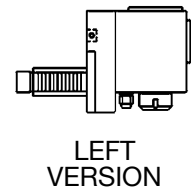
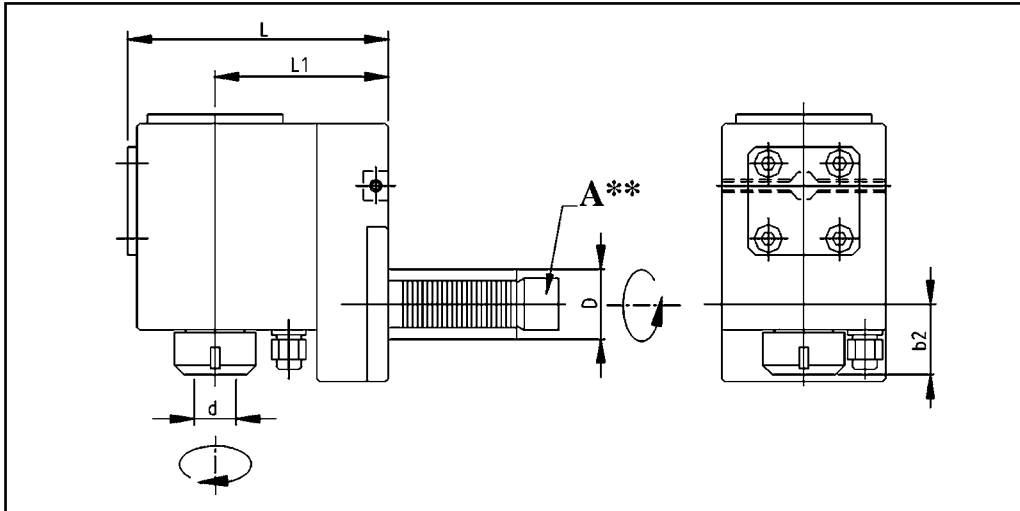
A** / D (mm)	Baruffaldi	Din 1809	Sauter Din 5482	Sauter Din 5480
16	—	—	...01	...49
20	...25	...17	...02	...50
30	...27	...18	...06	...52
40	...28	...19	...09	...53
50	...29	...20	...11	...54

Example:

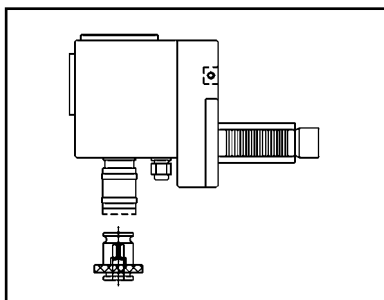
d = ECX/ER32
 D = 40
 A** = SAUTER DIN 5482
 ORDER NO. = TE40B2009

Radial Offset VDI Drilling & Milling Heads

DIN 69880



ORDER NO.	D (mm)	d	L (mm)	L1 (mm)	b2 (mm)	RPM Max	Ratio	Nm	Kg.
TE16C07...	16	ECX/ER11	70	48	28	6000	1:1	10	1.2
TE20C10...	20	ECX/ER16	70	48	37	6000	1:1	10	1.3
TE30C13...	30	ECX/ER20	106	70	48.5	6000	1:1	25	5.0
TE40C20...	40	ECX/ER32	130	86	40	6000	1:1	50	6.5
TE50C20...	50	ECX/ER32	130	86	40	6000	1:1	50	8.2
TE50C26...	50	ECX/ER40	140	100	45	4500	1:1	50	9.0



TAPPING HEAD (BILZ)
- ON REQUEST

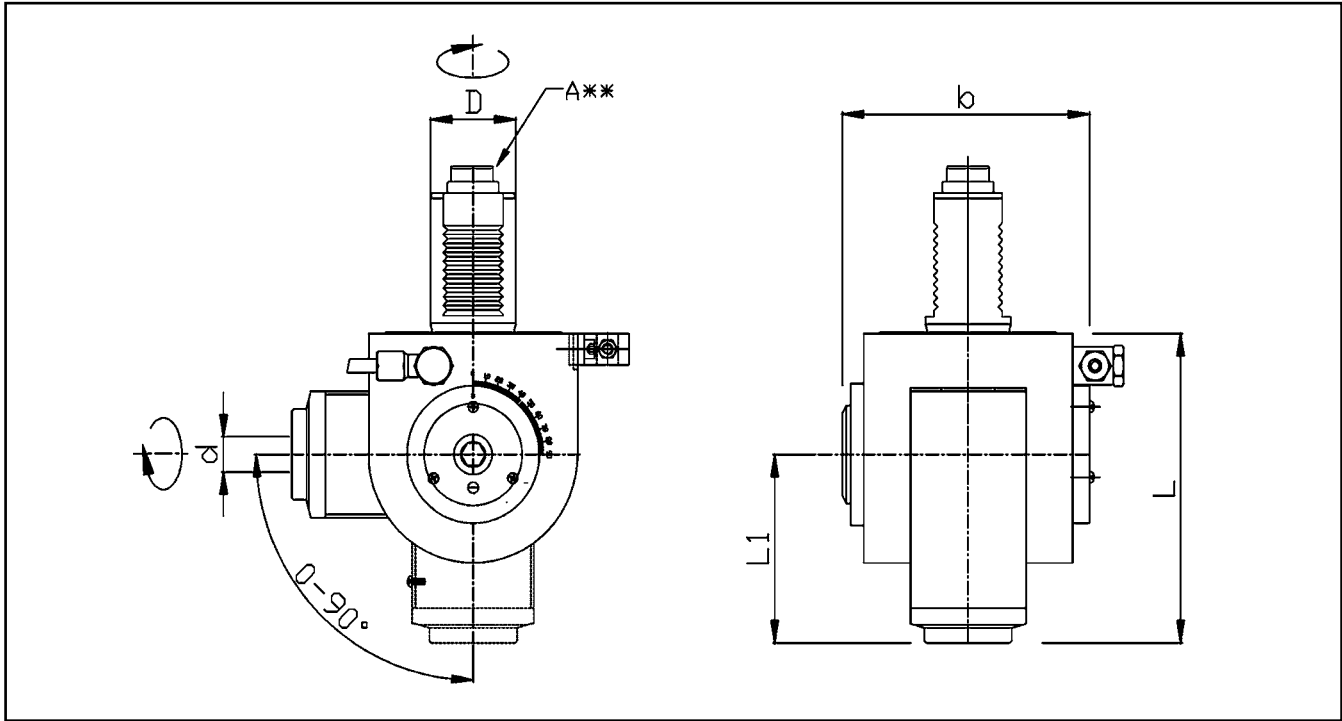
A** / D (mm)	Baruffaldi	Din 1809	Sauter Din 5482	Sauter Din 5480
16	-	-	...01	...49
20	...25	...17	...02	...50
30	...27	...18	...06	...52
40	...28	...19	...09	...53
50	...29	...20	...11	...54

Example:

d = ECX/ER32
D = 40
A** = SAUTER DIN 5482
ORDER NO. = TE40B2009

Universal Angle VDI Drilling & Milling Heads (0-90°)

DIN 69880

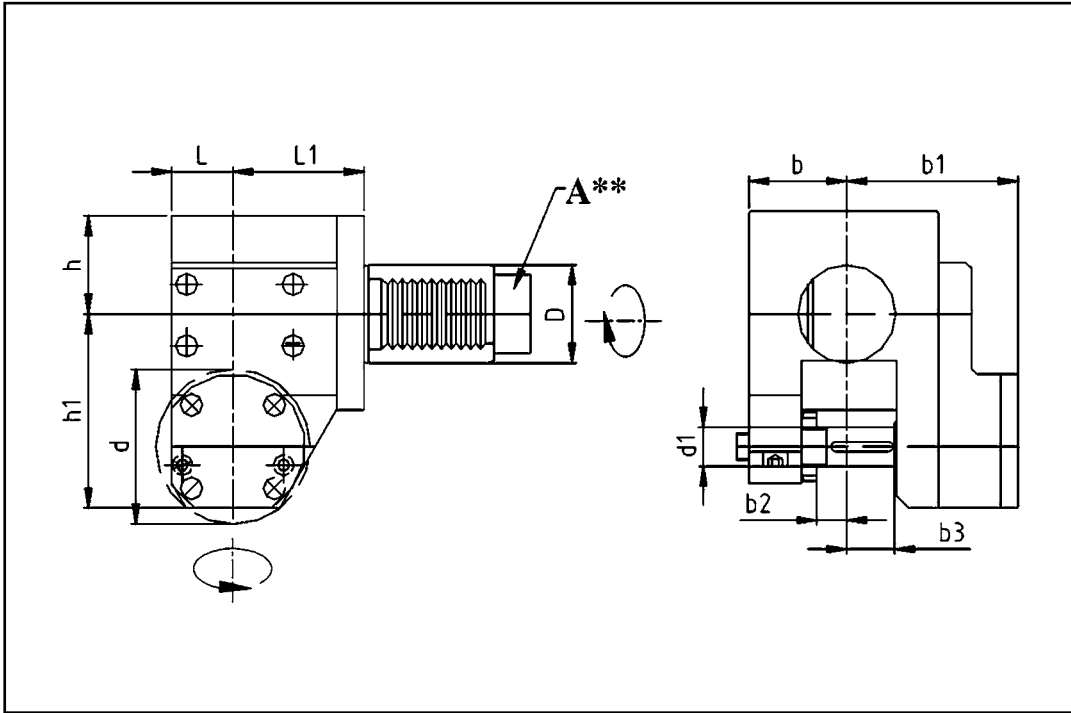


ORDER NO.	D (mm)	d	L (mm)	L1 (mm)	b (mm)	RPM Max	Ratio	Nm	Kg.
TE30E10...	30	ECX/ER16	115	75	92	6000	1:1	10	4.5
HE40E16...	40	ECX/ER25	140	85	116	6000	1:1	10	6.8
HE50E16...	50	ECX/ER25	140	85	116	6000	1:1	25	7.2

A** D (mm)	Baruffaldi	Din 1809	Sauter Din 5482	Sauter Din 5480
16	—	—	...01	...49
20	...25	...17	...02	...50
30	...27	...18	...06	...52
40	...28	...19	...09	...53
50	...29	...20	...11	...54

Slitting Saw VDI Drilling & Milling Heads

DIN 69880

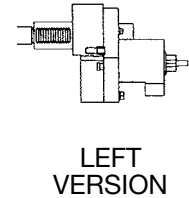
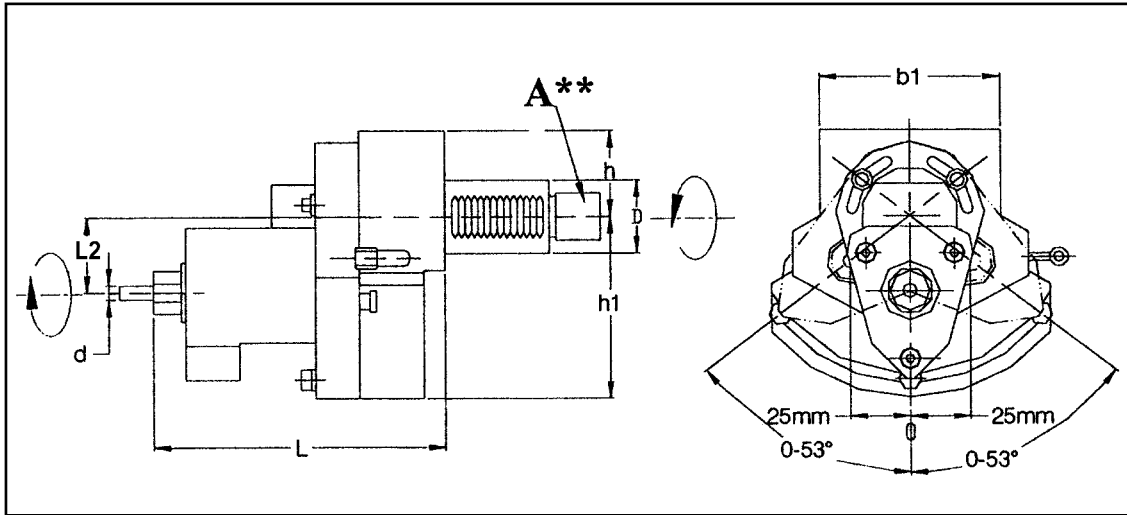


ORDER NO.	D (mm)	d (mm)	d1 (mm)	h (mm)	h1 (mm)	L (mm)	L1 (mm)	b (mm)	b1 (mm)	b2 (mm)	b3 (mm)	RPM Max	Ratio	Nm	Kg.
TD30V63...	30	63	16	42	80	25	54	40	70	12	18	2000	1:1	25	5.5
TD40V63...	40	63	16	42	80	25	54	40	70	12	18	2000	1:1	25	6.5
TD50V63...	50	63	16	42	80	25	54	40	70	12	18	2000	1:1	25	8.2

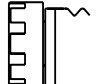
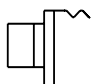


A** / D (mm)	Baruffaldi	Din 1809	Sauter Din 5482	Sauter Din 5480
16	—	—	...01	...49
20	...25	...17	...02	...50
30	...27	...18	...06	...52
40	...28	...19	...09	...53
50	...29	...20	...11	...54

Axial Adjustable Y-Axis VDI Drilling & Milling Heads

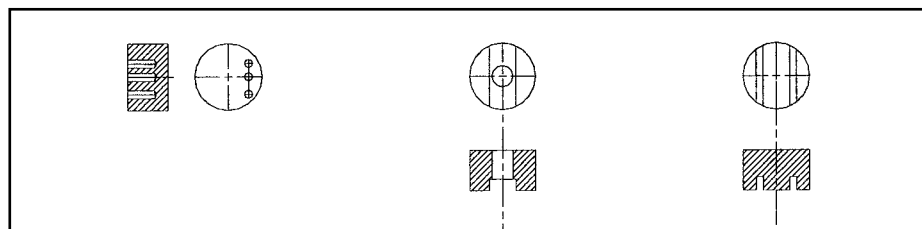
DIN 69880



ORDER NO.	D (mm)	d	L2 (mm)	L (mm)	h (mm)	h1 (mm)	b1 (mm)	RPM Max	Ratio	Nm
TE30H10...	30	ECX/ER20	31.5	120	40	75	80	6000	1:1	25
TE40H10...	40	ECX/ER32	31.5	120	40	75	80	6000	1:1	25
TE50H10...	50	ECX/ER40	31.5	120	40	75	80	6000	1:1	25

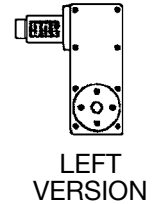
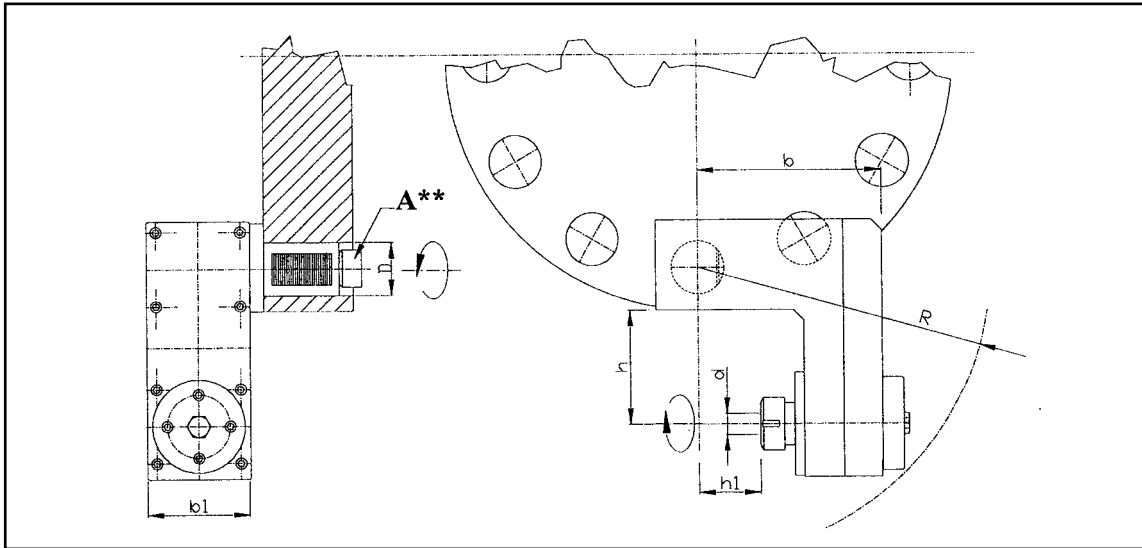
A** / D (mm)	 Baruffaldi	 Din 1809	 Sauter Din 5482	 Sauter Din 5480
16	—	—	...01	...49
20	...25	...17	...02	...50
30	...27	...18	...06	...52
40	...28	...19	...09	...53
50	...29	...20	...11	...54

WORKING EXAMPLE

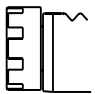
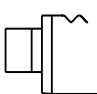
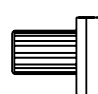



Radial Adjustable Y-Axis Drilling Heads

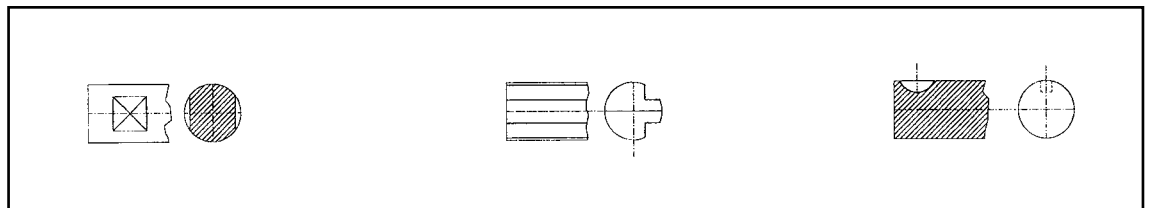
DIN 69880



ORDER NO.	D (mm)	d	R (mm)	h (mm)	h1 (mm)	b (mm)	b1 (mm)	RPM Max	Ratio	Nm	kg.
TE30D13...	30	ECX/ER20	170	45	25	140	70	4500	1:1	25	7.0
TE40D20...	40	ECX/ER32	200	80	30	140	80	4500	1:1	25	8.3
TE50D20...	50	ECX/ER40	275	148	50	200	98	4500	1:1	25	9.1

A** D (mm)	 <i>Baruffaldi</i>	 <i>Din 1809</i>	 <i>Sauter Din 5482</i>	 <i>Sauter Din 5480</i>
16	—	—	...01	...49
20	...25	...17	...02	...50
30	...27	...18	...06	...52
40	...28	...19	...09	...53
50	...29	...20	...11	...54

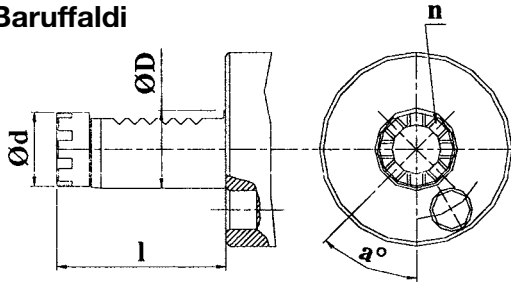
**WORKING
EXAMPLE**



Coupling for VDI Driven Tools

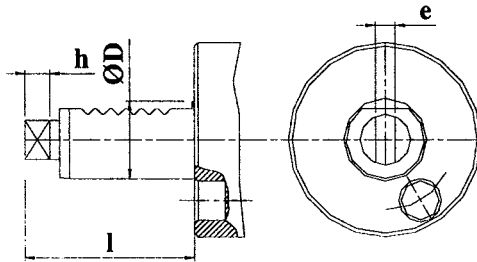
DIN 69880

Baruffaldi



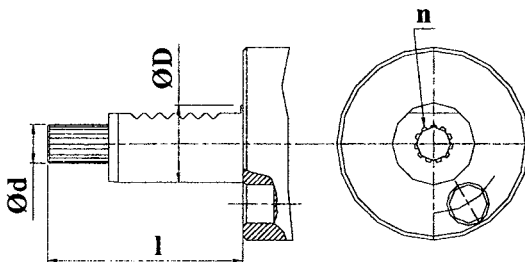
ØD (mm)	20	25	30	40	50		
l (mm)	44	51	59	68	84		
Ød(mm)	19	24	24	32	40		
n (mm)	6	6	6	8	8		
a°	60	60	60	45	45		
Code	...25	...26	...27	...28	...29		

Din 1809



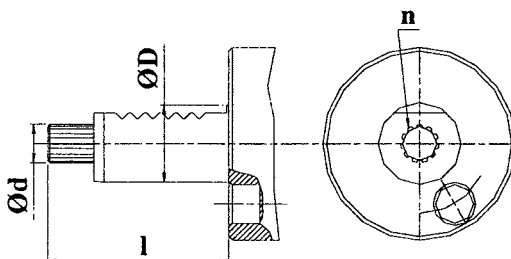
ØD (mm)	20	25	30	40	50	60	
l	48	57	62	72	92	110	
Ød(mm)	10	12	12	18	24	29	
e (mm)	5	6	6	8	12	14	
h (mm)	6.5	7	7	6.5	13	14	
Code	...16	...17	...18	...19	...20	...21	

Sauter (Din 5482)



ØD (mm)	16	20	30	40	50	60	80
l (mm)	44	51	55	63	93	108	144
Ød(mm)	15.5	9.84	14.5	16.5	19.5	24.5	27.5
n (mm)	13	11	8	9	12	14	15
Code	...01	...02	...06	...09	...11	...13	...15

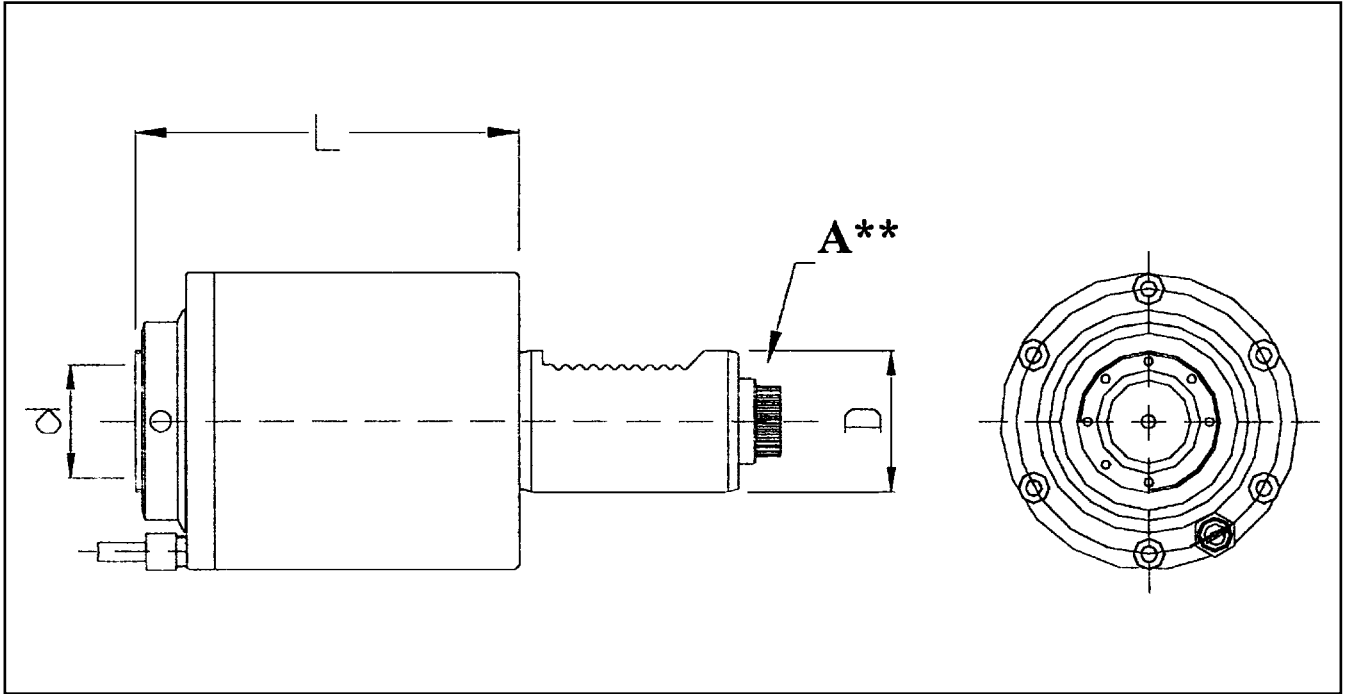
Sauter (Din 5480)




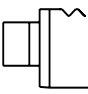
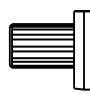
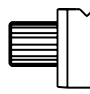
ØD (mm)	16	20	25	30	40	50	60	80
l (mm)	39	47	57	67	75	93	109	139
Ød(mm)	8	10	14	16	20	24	30	30
n (mm)	8	11	16	18	24	18	22	22
Code	...49	...50	...51	...52	...53	...54	...55	...56

Axial VDI Drilling And Milling Heads

Flush Nut DIN 69880

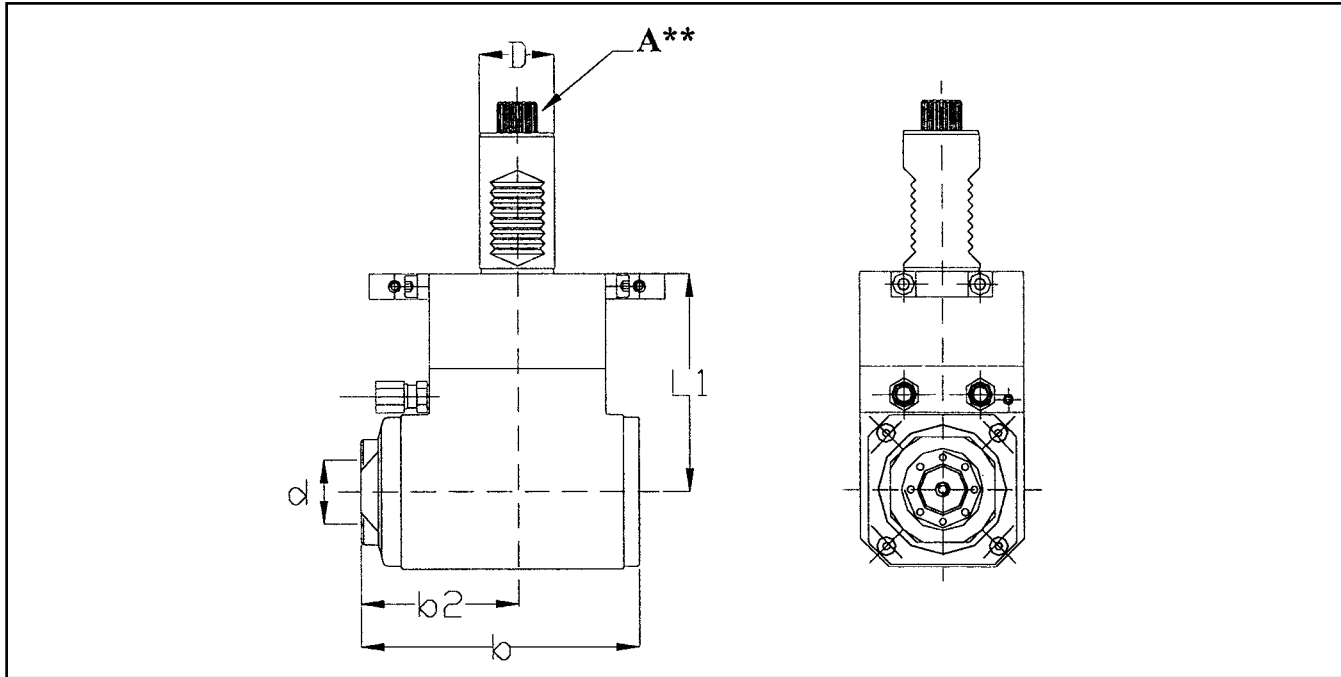


ORDER NO.	D (mm)	d	L (mm)	RPM Max	Ratio	Nm	Kg.
HE20A13...	20	ECX/ER16	61.5	6000	1:1	13	1.1
HE30A16...	30	ECX/ER25	71	6000	1:1	25	2.8
HE40A20...	40	ECX/ER25	110	6000	1:1	50	4.0

A** D (mm)	 <i>Baruffaldi</i>	 <i>Din 1809</i>	 <i>Sauter Din 5482</i>	 <i>Sauter Din 5480</i>
16	—	—	...01	...49
20	...25	...17	...02	...50
30	...27	...18	...06	...52
40	...28	...19	...09	...53
50	...29	...20	...11	...54

Radial VDI Drilling And Milling Heads

Flush Nut DIN 69880

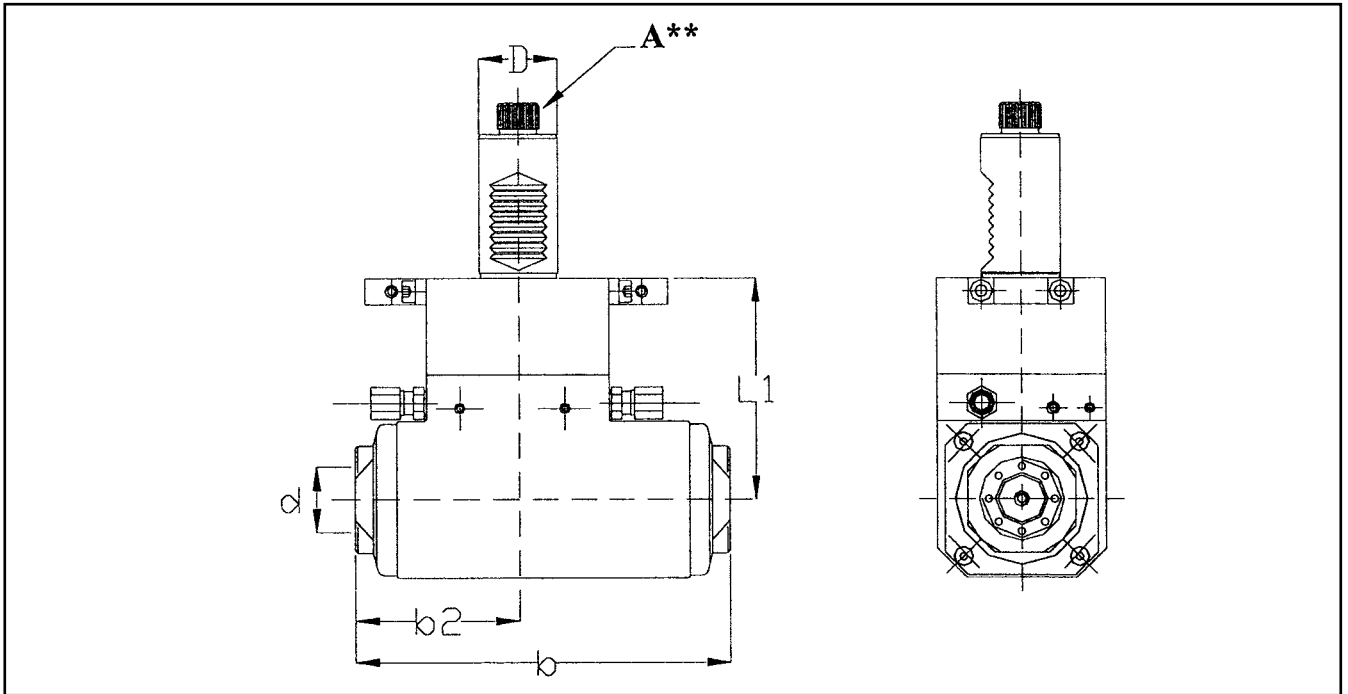


ORDER NO.	D (mm)	d	L1 (mm)	b (mm)	b2 (mm)	RPM Max	Ratio	Nm	Kg.
HE20B13...	20	ECX/ER20	75	97.5	55.5	6000	1:1	13	1.2
HE30B16...A	30	ECX/ER25	55	110.5	62.5	6000	1:1	25	3.9
HE30B16...B	30	ECX/ER25	85	110.5	62.5	6000	1:1	25	4.4
HE30B16...C	30	ECX/ER25	100	110.5	62.5	6000	1:1	25	4.6
HE40B20...A	40	ECX/ER32	100	130.5	75.5	6000	1:1	50	6.8
HE40B20...B	40	ECX/ER32	120	130.5	75.5	6000	1:1	50	7.0

A** / D (mm)	Baruffaldi	Din 1809	Sauter Din 5482	Sauter Din 5480
16	-	-	...01	...49
20	...25	...17	...02	...50
30	...27	...18	...06	...52
40	...28	...19	...09	...53
50	...29	...20	...11	...54

Radial VDI Double Spindle & Milling Heads

Flush Nut DIN 69880

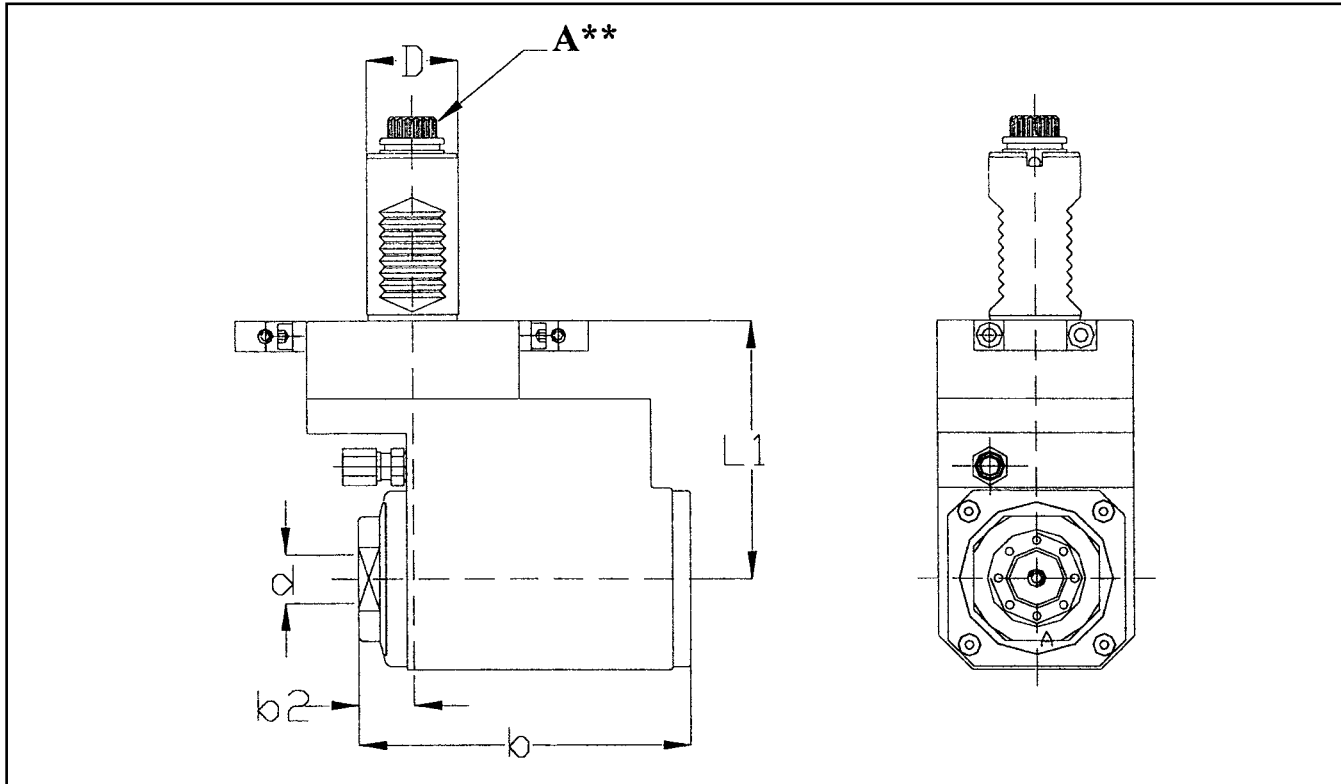


ORDER NO.	D (mm)	d	L1 (mm)	b (mm)	b2 (mm)	RPM Max	Ratio	Nm	Kg.
HE20L13...	20	ECX/ER20	75	131.5	54	6000	1:1	13	2.4
HE30L16...A	30	ECX/ER25	85	145	64	6000	1:1	25	5.4
HE30L16...B	30	ECX/ER25	100	145	64	6000	1:1	25	5.6
HE40L20...A	40	ECX/ER32	100	176	76	6000	1:1	50	8.5
HE40L20...B	40	ECX/ER32	120	176	76	6000	1:1	50	8.8

A** / D (mm)	Baruffaldi	Din 1809	Sauter Din 5482	Sauter Din 5480
16	-	-	...01	...49
20	...25	...17	...02	...50
30	...27	...18	...06	...52
40	...28	...19	...09	...53
50	...29	...20	...11	...54

Radial VDI (Short) Drilling & Milling Heads

Flush Nut DIN 69880

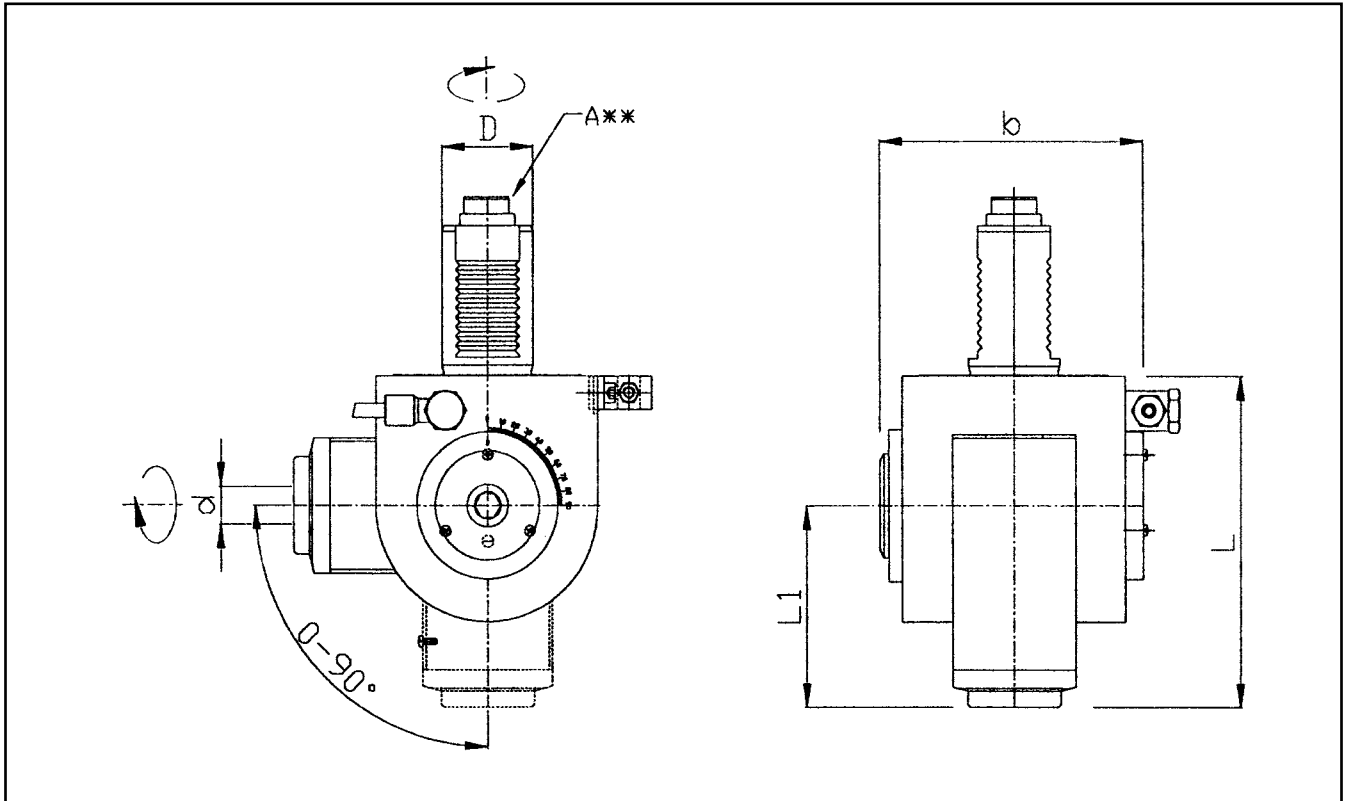


ORDER NO.	D (mm)	d	L1 (mm)	b (mm)	b2 (mm)	RPM Max	Ratio	Nm	Kg.
HE20C13...	20	ECX/ER20	61.5	100	20	6000	1:1	13	1.4
HE30C16...A	30	ECX/ER25	68.5	112	20	6000	1:1	25	6.0
HE40C20...B	40	ECX/ER32	80	136	28	6000	1:1	50	7.8

A** / D (mm)	Baruffaldi	Din 1809	Sauter Din 5482	Sauter Din 5480
16	-	-	...01	...49
20	...25	...17	...02	...50
30	...27	...18	...06	...52
40	...28	...19	...09	...53
50	...29	...20	...11	...54

Universal Angle VDI 0-90° Driven Tools

Flush Nut DIN 69880



ORDER NO.	D (mm)	d	L1 (mm)	b (mm)	b2 (mm)	RPM Max	Ratio	Nm	Kg.
TE30E10...	20	ECX/ER20	115	75	92	6000	1:1	10	4.5
HE40E16...	40	ECX/ER32	140	85	116	6000	1:1	25	6.8

A** / D (mm)	Baruffaldi	Din 1809	Sauter Din 5482	Sauter Din 5480
16	—	—	...01	...49
20	...25	...17	...02	...50
30	...27	...18	...06	...52
40	...28	...19	...09	...53
50	...29	...20	...11	...54