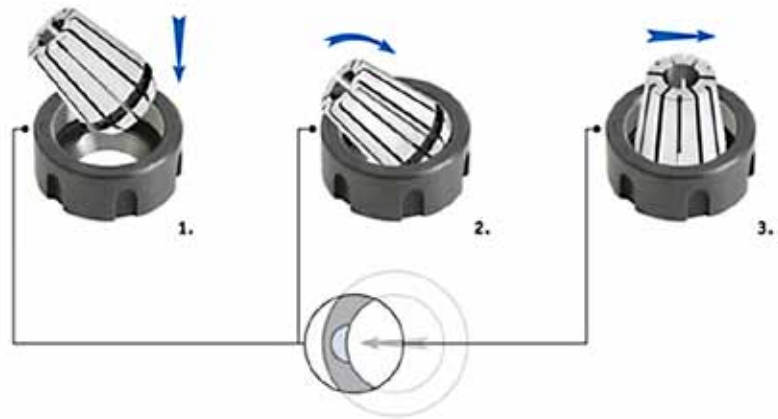


EasyClick® by Techleader

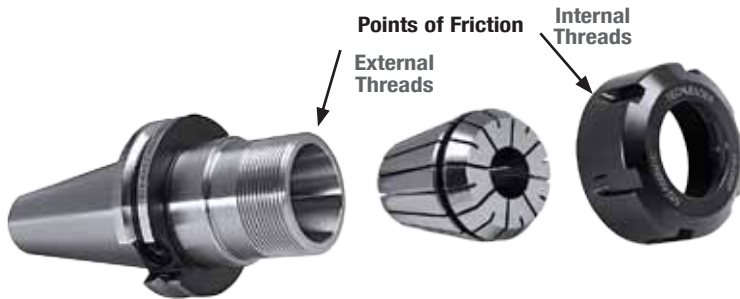


EasyClick:

Describes all types of clamping nut for an easy assembling of the collets in accordance with DIN 6499/ISO 15488. Based on a marking, the collet can snap in the clamping nut and therefore facilitates the assembly in the clamping chucks.

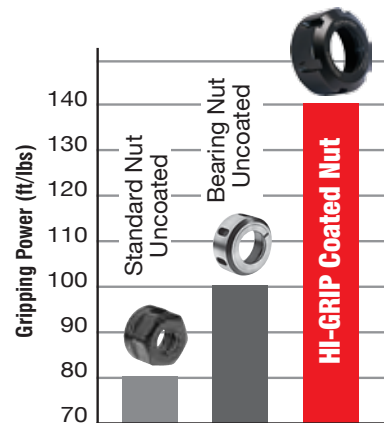


HI-GRIP Coated Nut



Our special HI-GRIP nut reduces friction so it can increase holding power by 70% compared to standard nuts. Holding power increases cutting tool life.

HI-GRIP POWER TEST (ft/lbs)



Each nut was tightened to 70 ft/lbs recommended torque before break-free testing of holding power

Coated:

Describes those types of clamping nuts that can, by request, be given a coating. The method, specially developed by Techleader in collaboration with our Swiss partner reduces the friction between the interior and exterior thread during tightening. This enhances the clamping force by more the 70%.

Balanced:

Describes those types of clamping nuts that are particularly suitable to, and recommended for, high speeds. The mechanical properties (material quality) of all clamping nuts by Techleader in collaboration with our Swiss partner are basically suitable to high-speed applications. The material used is tested for cracks. Nevertheless the residual unbalance of the entire tool must always be taken into consideration.

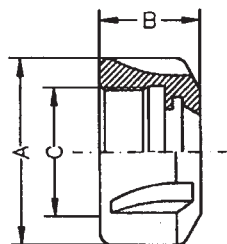
Case-hardened:

Describes the Techleader in collaboration with our Swiss partner manufacturing procedure. The case hardening makes the clamping nuts resistant to external mechanical influences and lends them a tough core. After case hardening, the thread and the cone are ground in one jig. The running accuracy this achieves is unique.

Open Grooves:

Describes all types of clamping nuts that have grooves open up to the front. This permits the use of a special safety wrench that prevents almost any slipping and possible injury. A standard hook wrench can also be used.

ECX (ER) Collet Nuts



Castellation Nuts

for type ECX/ER/ESX Collets. Balanced

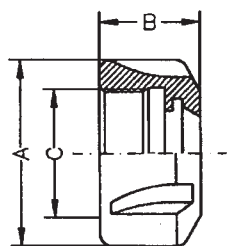
Chuck Size	Order No.	A (mm)	B (mm)	C	MAX. RPM
ECX 16	016-000 NC	32	17.5	M22 x 1.5P	40,000
ECX 20	021-000 NC	35	19	M25 x 1.5P	40,000
ECX 25	025-000 NC	42	20	M32 x 1.5P	35,000
ECX 32	032-000 NC	50	23	M40 x 1.5P	35,000
ECX 40	040-000 NC	63	25	M50 x 1.5P	25,000
ECX 50	050-000 NC	78	35.5	M64 x 2.0P	15,000

COATED HI-GRIP Castellation Nuts

High Clamping Power Style for type ECX/ER/ESX Collets. Balanced

Chuck Size	Order No.	A (mm)	B (mm)	C	MAX. RPM
ECX 16	016-000 NCC	32	17.5	M22 x 1.5P	40,000
ECX 20	021-000 NCC	35	19.0	M25 x 1.5P	40,000
ECX 25	025-000 NCC	42	20.0	M32 x 1.5P	35,000
ECX 32	032-000 NCC	50	23.0	M40 x 1.5P	35,000
ECX 40	040-000 NCC	63	25.0	M50 x 1.5P	25,000
ECX 50	050-000 NCC	78	35.5	M64 x 2.0P	15,000

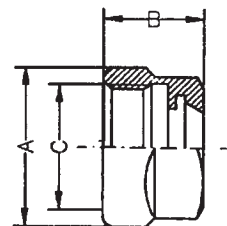
EasyClick by Techleader



Hexagon Nuts

for type ECX/ER/ESX Collets. Balanced to 40,000 RPM

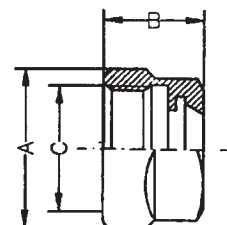
Chuck Size	Order No.	A (mm)	B (mm)	C
ECX 11	011-000-NH	19	12	M14 x 0.75P
ECX 16	016-000-NH	28	17.5	M22 x 1.5P
ECX 20	021-000-NH	34	19	M25 x 1.5P



COATED HI-GRIP Hexagon Nuts

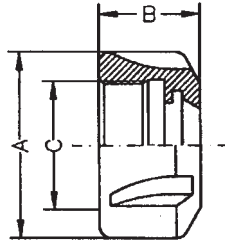
High Clamping Power Style for type ECX/ER/ESX Collets. Balanced to 40,000 RPM

Chuck Size	Order No.	A (mm)	B (mm)	C
ECX 11	011-000 NHC	19	12.0	M14 x 0.75P
ECX 16	016-000 NHC	28	17.5	M22 x 1.5P
ECX 20	021-000 NHC	34	19.0	M25 x 1.5P



- Profit from the advantages of EasyClick
- Complete overlap of the cone, nut and collet
- High rotation accuracy of the clamped tools
- User-friendly handling thanks to optical fit-up aid
- Balanced for high-speed and quiet running
- Highly wear-resistant due to surface hardness
- Sleeve and ball bearing clamping nut version sealed up against swarf

ECX (ER) Collet Nuts



Castellation Nuts

for type ECX/ER/ESX Collets. Balanced over 15,000 RPM

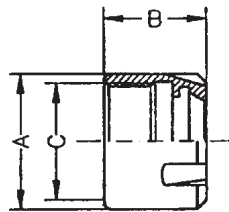
Chuck Size	Order No.	A (mm)	B (mm)	C	Max. RPM
ECX 16	016-000NHS	32	18.5	M22 x 1.5P	60,000
ECX 20	021-000NHS	35	19.5	M25 x 1.5P	50,000
ECX 25	025-000NHS	42	20.0	M32 x 1.5P	40,000
ECX 32	032-000NHS	50	23.0	M40 x 1.5P	40,000
ECX 40	040-000NHS	63	26.0	M50 x 1.5P	30,000

Mini Nuts

for type ECX/ER/ESX Collets

Chuck Size	Order No.	A (mm)	B (mm)	C	Max. RPM
ECX 8	008-000-NM	12	10.8	M10 x 0.75P	80,000
ECX 11	011-000-NM	16	11.3	M13 x 0.75P	70,000
ECX 16	016-000-NM	22	17	M19 x 1.0P	60,000
ECX 20	020-000-NM	28	19	M24 x 1.0P	50,000
ECX 25	025-000-NM	35	20	M30 x 1.0P	40,000

EasyClick by Techleader

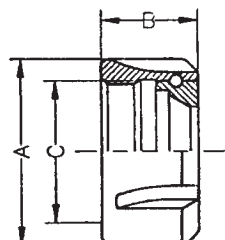
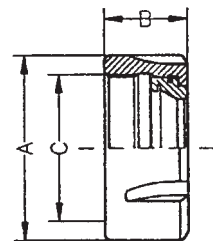


Mini Nuts-High Clamping Power Style

for type ECX/ER/ESX Collets

Chuck Size	Order No.	A(mm)	B (mm)	C	Max. RPM
ECX 8	008-000NMC	12	10.8	M10 x 0.75P	80,000
ECX 11	011-000NMC	16	11.3	M13 x 0.75P	70,000
ECX 16	016-000NMC	22	17	M19 x 1.0P	60,000
ECX 20	020-000NMC	28	19	M24 x 1.0P	50,000
ECX 25	025-000NMC	35	20	M30 x 1.0P	40,000

- Profit from the advantages of EasyClick
- Complete overlap of the cone, nut and collet
- High rotation accuracy of the clamped tools
- User-friendly handling thanks to optical fit-up aid
- Balanced for high-speed and quiet running
- Highly wear-resistant due to surface hardness
- Sleeve and ball bearing clamping nut version sealed up against swarf



Friction Bearing Nuts

for type ECX/ER/ESX Collets

Chuck Size	Order No.	A (mm)	B (mm)	C
ECX 16	016-000NFB	32	20.3	M22 x 1.5P
ECX 20	020-000NFB	35	21.6	M25 x 1.5P
ECX 25	025-000NFB	42	22.5	M32 x 1.5P
ECX 32	032-000NFB	50	25.1	M40 x 1.5P
ECX 40	040-000NFB	63	28.2	M50 x 1.5P

Ball Bearing Nuts

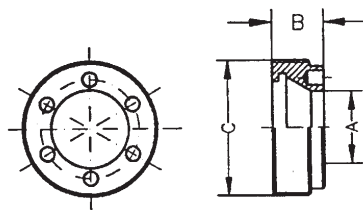
for type ECX/ER/ESX Collets

Chuck Size	Order No.	A (mm)	B (mm)	C
ECX 25	025-000-NB	42	22	M32 x 1.5P
ECX 32	032-000-NB	50	26	M40 x 1.5P
ECX 40	040-000-NB	63	29	M50 x 1.5P

ECX (ER) Collet Nuts & Wrenches



Nuts with thread on outside for type ECX/ER/ESX, DR & RD Collets



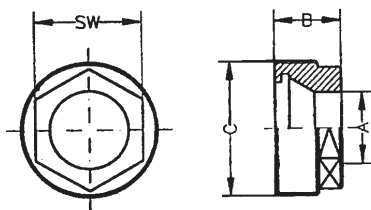
Pin Wrench Style

Chuck Size	Order No.	A	B	C
ECX 11	011-000-NAL	9 mm	6 mm	M18x1P
ECX 16	016-000-NAL	13mm	8 mm	M24x1P
ECX 20	020-000-NAL	15 mm	11 mm	M28x1.5P
ECX 25	025-000-NAL	18 mm	12.5 mm	M32x1.5P
ECX 32	032-000-NAL	24 mm	14 mm	M40x1.5P



EasyClick by Techleader

- Profit from the advantages of EasyClick
- Complete overlap of the cone, nut and collet
- High rotation accuracy of the clamped tools
- User-friendly handling thanks to optical fit-up aid
- Balanced for high-speed and quiet running
- Highly wear-resistant due to surface hardness
- Sleeve and ball bearing clamping nut version sealed up against swarf



Hexagon Wrench Style

Chuck Size	Order No.	A	B	C
ECX 16	016-000-NAS	13 mm	11 mm	M24x1P
ECX 20	020-000-NAS	15 mm	14 mm	M28x1.5P
ECX 25	025-000-NAS	18 mm	14 mm	M32x1.5P
ECX 32	032-000-NAS	24 mm	17.5 mm	M40x1.5P



CASTELLATION



HEXAGON

C = Castellation
H = Hexagon
HS = High Speed

Spanners for ECX Collet Chucks

Chuck Size	Order No.	Description
ECX 16	016-000-WH	SPANNER (H)
ECX 16	016-000-WC	SPANNER (C)
ECX 16HS	016-000-HSW	SPANNER (HS)
ECX 20	021-000-WC	SPANNER (C)
ECX 20	021-000-WH	SPANNER (H)
ECX 25	025-000-WC	SPANNER (C)
ECX 32	032-000-WC	SPANNER (C)
ECX 40	040-000-WC	SPANNER (C)



Mini Nut Style

Chuck Size	Order No.
ECX 8	008-000-WM
ECX 11	011-000-WM
ECX 16	016-000-WM
ECX 20	020-000-WM
ECX 25	025-000-WM