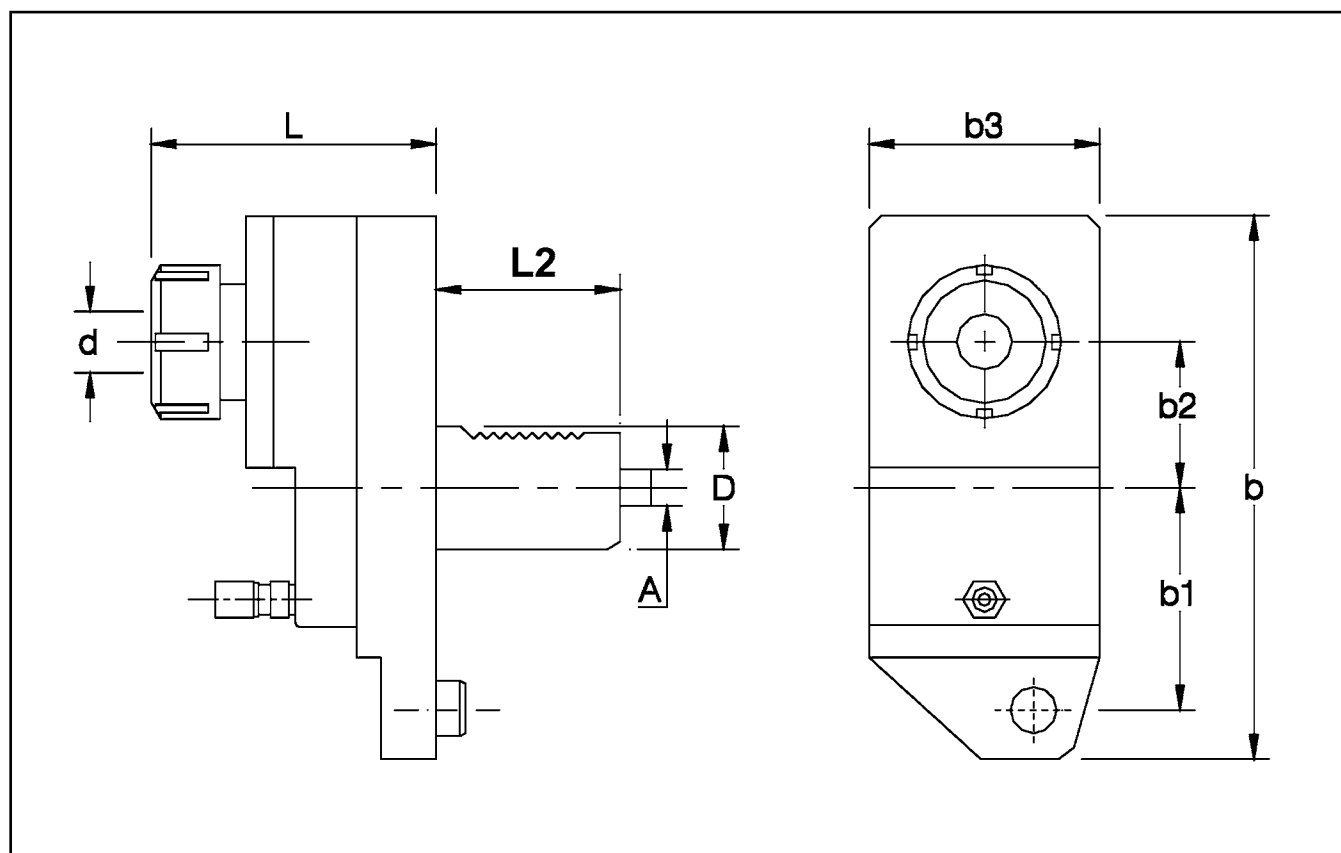


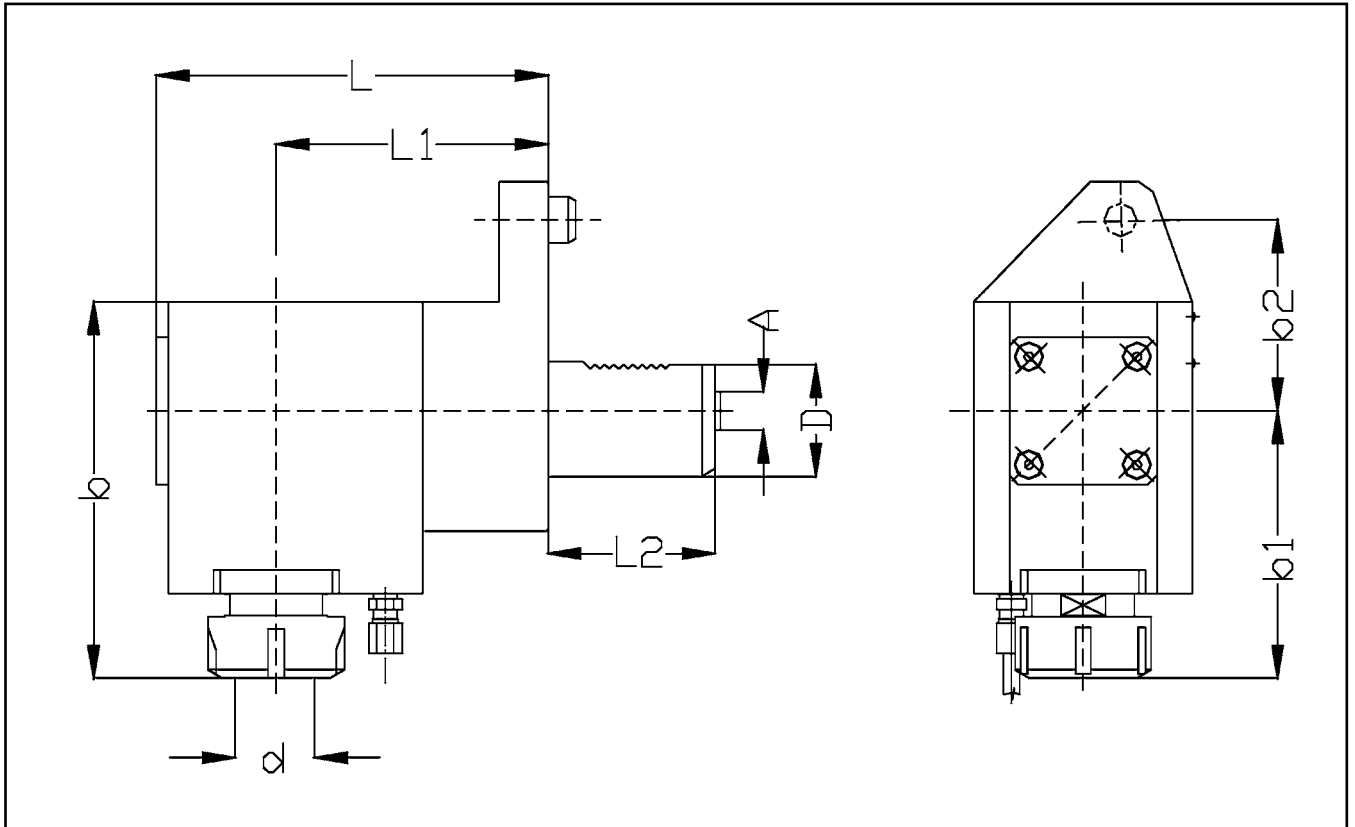
MAZAK

V-Type (Axial) Drilling & Milling Heads



ORDER NO.	D (mm)	Machine	d	A (mm)	L2 (mm)	L (mm)	b (mm)	b1 (mm)	b2 (mm)	b3 (mm)	RPM Max	Ratio	Nm	Kg.
TE40F2045	40	SQ 10 M/C	ECX/ER32	10	60	94	174	70	50	74	6000	1:1	50	5.0
TE40F2046	40	SQ 15 MY	ECX/ER32	10	70	94	174	70	50	74	6000	1:1	50	6.0
TE40F2046	40	SQT 250 MS	ECX/ER32	10	70	94	174	70	50	74	6000	1:1	50	6.0

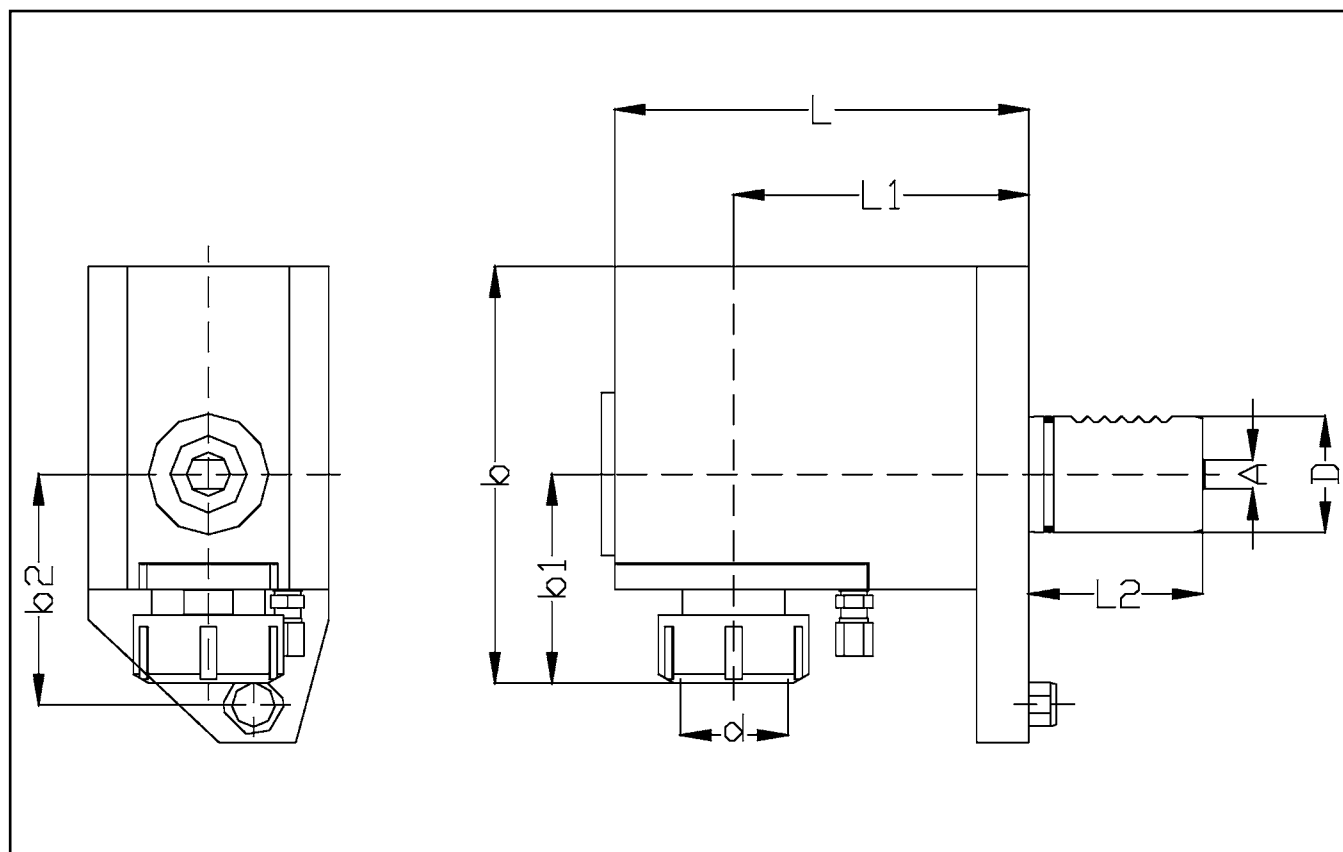
MAZAK H-Type (Radial) Drilling & Milling Heads



ORDER NO.	D (mm)	Machine	d	A (mm)	L2 (mm)	L (mm)	L1 (mm)	b (mm)	b1 (mm)	b2 (mm)	b3 (mm)	RPM Max	Ratio	Nm	Kg.
TE40B2045	40	SQ 10 M/C	ECX/ER32	10	60	144	100	138	98	70	74	6000	1:1	50	8.0
TE40B2046	40	SQ 15 MY	ECX/ER32	10	70	174	130	138	98	70	74	6000	1:1	50	9.0
TE40B2046	40	SQT 250 MS	ECX/ER32	10	70	174	130	138	98	70	74	6000	1:1	50	9.0

MAZAK

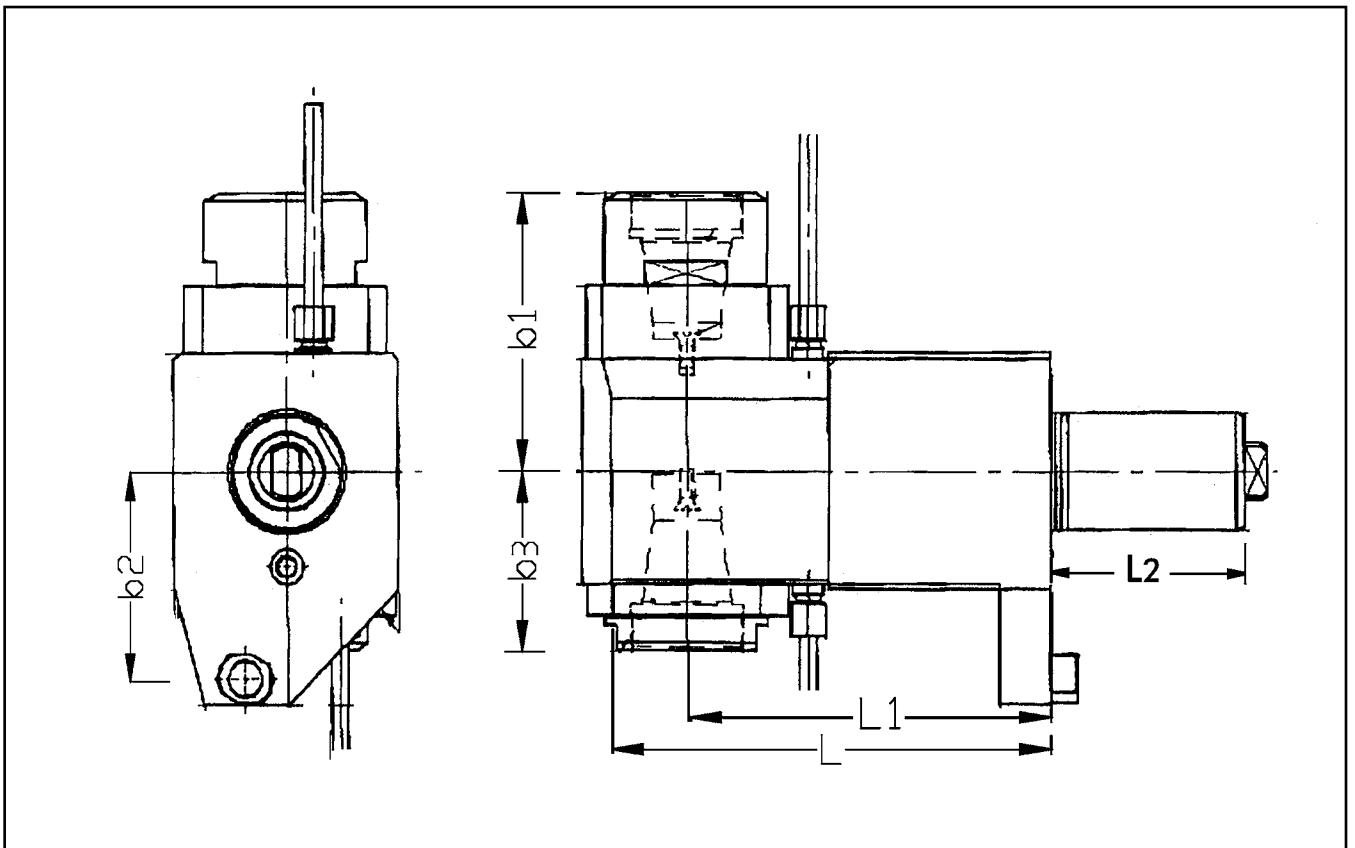
H-Type (Radial) Drilling & Milling Heads (Subspindle)



ORDER NO.	D (mm)	Machine	d	A (mm)	L2 (mm)	L (mm)	L1 (mm)	b (mm)	b1 (mm)	b2 (mm)	RPM Max	Ratio	Nm	Kg.
TE40C2045S	40	SQ 10 M/C	ECX/ER32	10	60	144	100	138	40	70	6000	1:1	50	9
TE40C2046S	40	SQ 15 MY	ECX/ER32	10	70	174	130	138	40	70	6000	1:1	50	10
TE40C2046S	40	SQT 250 MS	ECX/ER32	10	70	174	130	138	40	70	6000	1:1	50	10

MAZAK

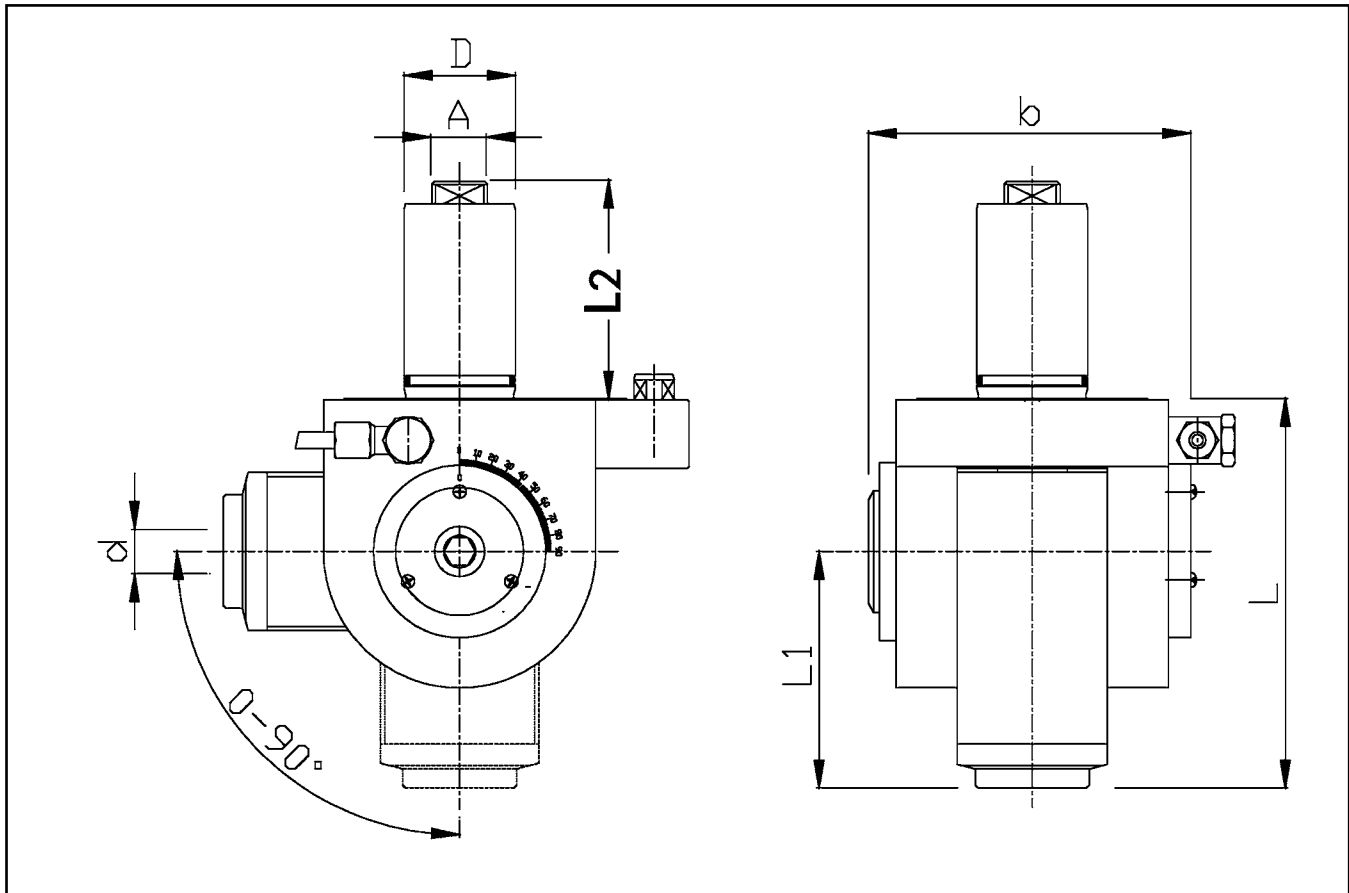
H-Type (Radial) Double Drilling Milling Heads



ORDER NO.	D (mm)	Machine	d	A (mm)	L2 (mm)	L (mm)	L1 (mm)	b1 (mm)	b2 (mm)	b3 (mm)	RPM Max	Ratio	Nm	Kg.
TE40L2046	40	SQ 15 MY	ECX/ER32	10	70	137	100	94.5	70	60.5	6000	1:1	50	12
TE40L2046	40	SQT 250 MS	ECX/ER32	10	70	137	100	94.5	70	60.5	6000	1:1	50	12

MAZAK

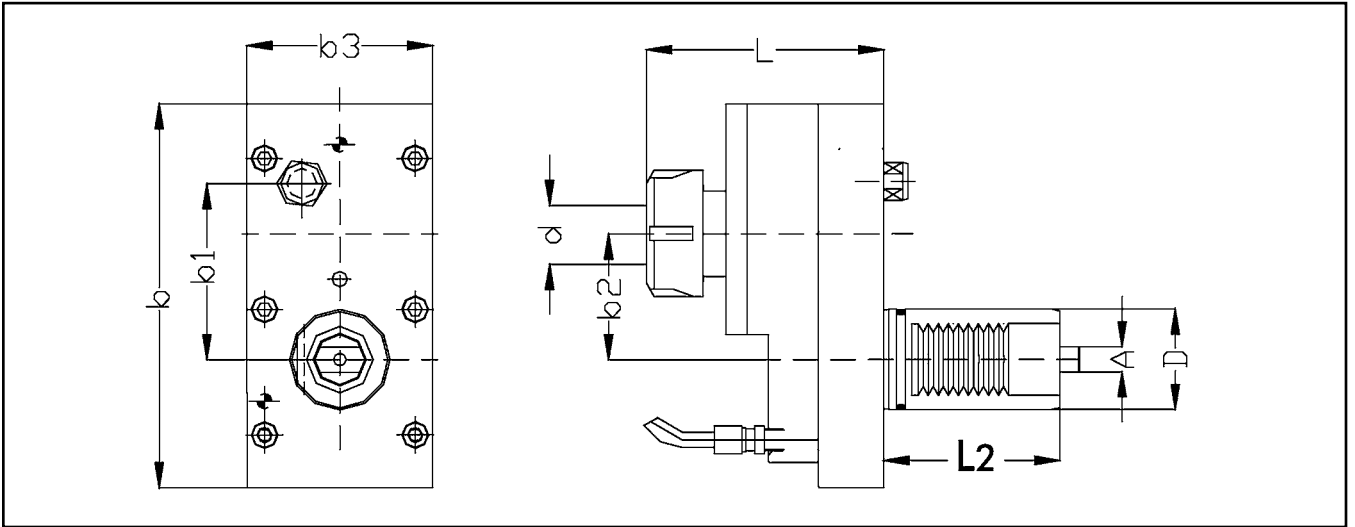
Universal Angle Drilling-Milling Heads



ORDER NO.	D (mm)	Machine	d	A (mm)	L2 (mm)	L (mm)	L1 (mm)	b (mm)	RPM Max	Ratio	Nm	Kg.
HE40E1645	40	SQ 10 M/C	ECX/ER25	10	60	140	85	116	6000	1:1	25	6.9
HE40E1646	40	SQ 15 MY	ECX/ER25	10	70	140	85	116	6000	1:1	25	6.9
HE40E1646	40	SQT 250 MS	ECX/ER25	10	70	140	85	116	6000	1:1	25	6.9

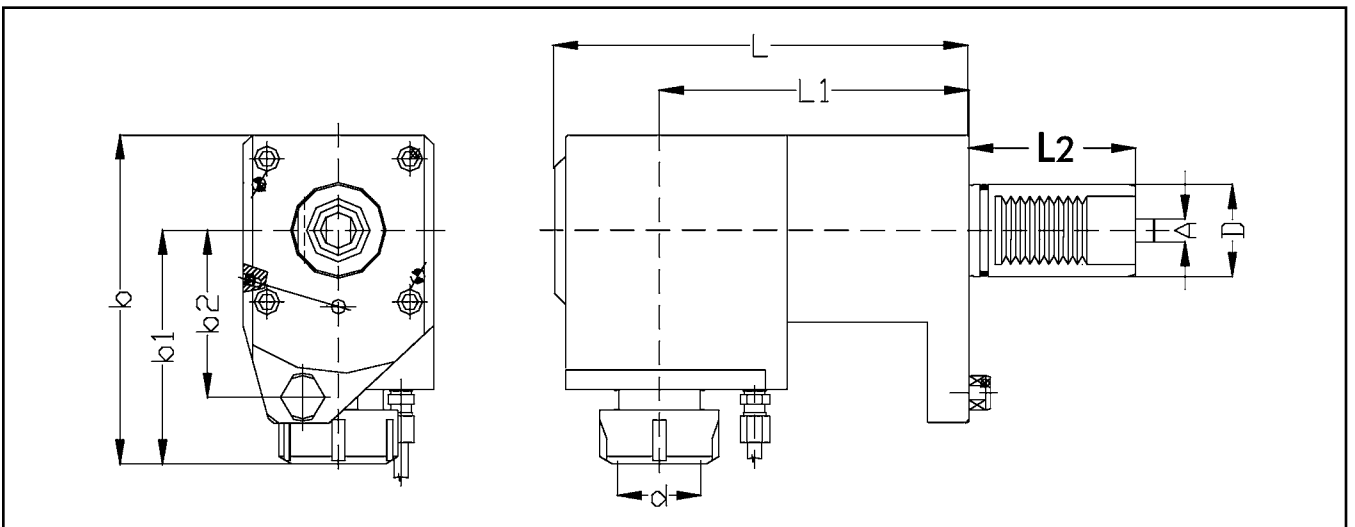
MAZAK

V-Type (Axial) Drilling & Milling Heads



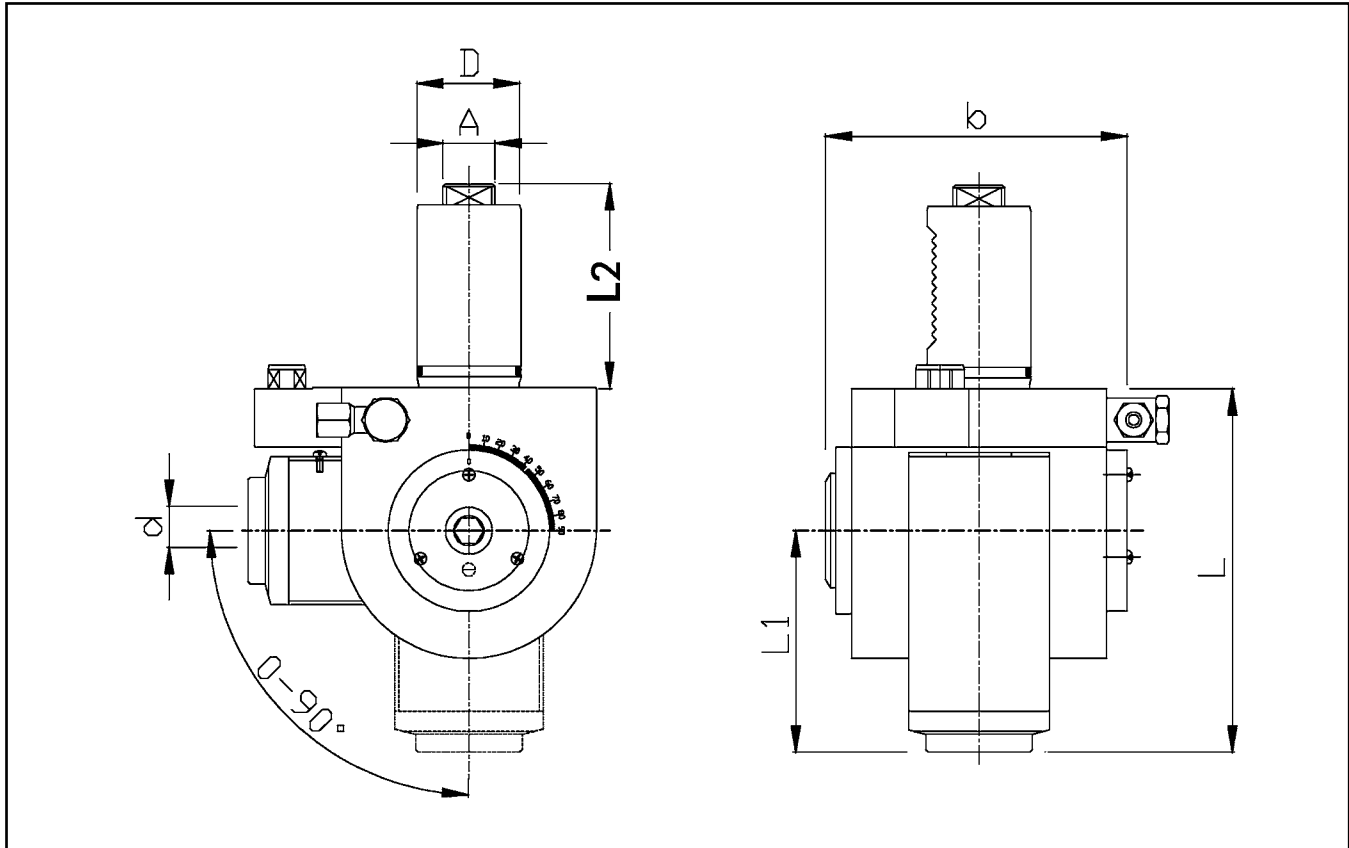
ORDER NO.	D (mm)	Machine	d	A (mm)	L2 (mm)	L (mm)	b (mm)	b1 (mm)	b2 (mm)	b3 (mm)	RPM Max	Ratio	Nm	Kg.
TE40F2047	40	MULTIPLEX 6200	ECX/ER32	10	70	95	153	98	50	74	6000	1:1	50	6

H-Type (Radial) Drilling & Milling Heads



ORDER NO.	D (mm)	Machine	d	A (mm)	L2 (mm)	L (mm)	L1 (mm)	b (mm)	b1 (mm)	b2 (mm)	RPM Max	Ratio	Nm	Kg.
TE40B2047	40	MULTIPLEX 6200	ECX/ER32	10	70	174	130	138	98	70	6000	1:1	50	9

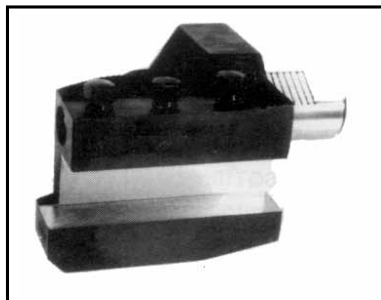
MAZAK Universal Angle Drilling-Milling Heads



ORDER NO.	D (mm)	Machine	d	A (mm)	L2 (mm)	L (mm)	L1 (mm)	b (mm)	RPM Max	Ratio	Nm	Kg.
HE40E1647	40	MULTIPLEX 6200	ECX/ER25	10	70	140	85	116	6000	1:1	25	6.9

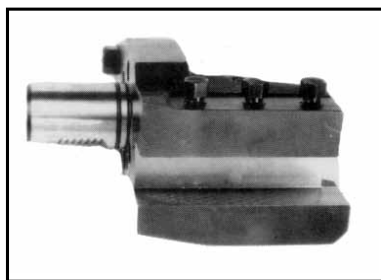
Toolholders to Fit Mazak SQT & Multiplex CNC Lathes

Forward Turn



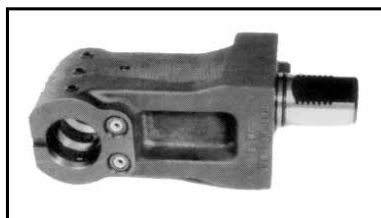
Machine Model	Description	Mazak No.	Order No.
SQT10/100	Forward Turn	53518010100	110-FTH40
SQT15/18/200/250	Forward Turn	53618010100	115-FTH40
SQT28	Forward Turn	53818010100	128-FTH50
MP420/620/6200	Forward Turn	53478005200	MP620-FTM
MP430/630	Forward Turn	53478006101	MP630-FTM

Reverse Turn



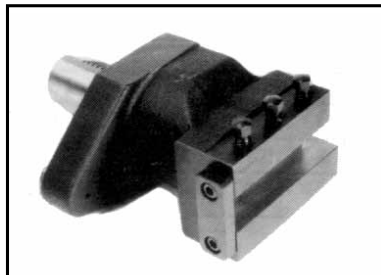
Machine Model	Description	Mazak No.	Order No.
SQT10/100	Reverse Turn	53518010700	110-RTH40
SQT15/18/200/250	Reverse Turn	53618010600	115-RTH40
SQT28	Reverse Turn	53818010600	128-RTH50
MP420/620/6200	Reverse Turn	53478005100	MP620-RTH
MP430/630	Reverse Turn	53488006001	MP630-RTH

Boring Bar



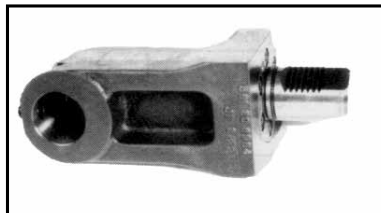
Machine Model	Description	Mazak No.	Order No.
SQT10/100	1-1/4" Boring Bar	53518010200	110-B0H40
SQT200/250	1-1/2" Boring Bar	53208015100	125-B0H40
SQT28	2" Boring Bar	53818010200	128-B0H50
MP420/620/6200	1-1/2" Boring Bar	53578005300	MP620-B0H
MP430/630	2" Boring Bar	53488006201	MP630-B0H

Facing Holder



Machine Model	Description	Mazak No.	Order No.
SQT10/100	Facing Holder	53518010300	110-FAH40
SQT15/18/200/250	Facing Holder	53618010300	115-FAH40
SQT28	Facing Holder	53818010300	128-FAH50
MP420/620/6200	Facing Holder	53578005200	MP620-FAH
MP430/630	Facing Holder	53478806400	MP630-FAH

U-Drill Holder

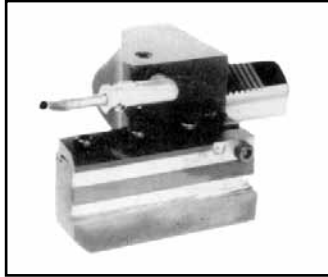


Machine Model	Description	Mazak No.	Order No.
SQT10/100	U-Drill Holder 32 mm	53518010500	110-UDH40
SQT15/18/200/250	U-Drill Holder 40mm	53208015200	115-UDH40
SQT28	U-Drill Holder 40mm	53818010500	128-UDH40
MP420/620/6200	U-Drill Holder 40mm	53478005700	MP620-UDH
MP430/630	U-Drill Holder 40mm	53488001801	MP630-UDH

Additional Mazak Toolholders available for other machines including Quick Turn (QT), Multiplex, and Dual Turn.

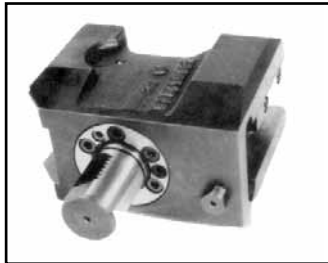
Toolholders to Fit Mazak SQT CNC Lathes

Cut Off Holder



Machine Model	Description	Mazak No.	Order No.
SQT10/100	Cut off holder	53518000401	110-COH40
SQT15/18/200/250	Cut off holder	53618010400	115-COH40
SQT28	Cut off holder	53818000401	128-COH50
MP420/620-6200	Cut off holder	53478000900	MP620-COH
MP430/630	Cut off holder	53478001601	MP630-COH

Double Turn Holder



Machine Model	Description	Mazak No.	Order No.
SQT10/100	Double Turn	53538010100	110-DTH40
SQT15/18/200/250	Double Turn	53638010300	115-DTH40
SQT28	Double Turn	53838010800	128-DTH50

Double Boring Bar



Machine Model	Description	Mazak No.	Order No.
SQT10/100	3/4" double boring	53538010200	110-SBH40
SQT15/18/200/250	1" double boring	53638010400	115-SBH40
SQT28	1" double boring	53838010900	128-SBH50

Turret Cap



Machine Model	Description	Mazak No.	Order No.
SQT10/100	Turret Cap	53518000600	110-CAP40
SQT15/18/200/250	Turret Cap	53618000600	115-CAP40
SQT28	Turret Cap	53818000700	128-CAP50

Turret Clamp Set



Machine Model	Description	Mazak No.	Order No.
SQT10/100	Turret Clamp Set	53518010700	110-TCS40
SQT15/18	Turret Clamp Set	53618010600	115-TCS40
SQT28	Turret Clamp Set		128-TCS50

Additional Mazak Toolholders available for other machines including Quick Turn (QT), Multiplex, and Dual Turn.

Bushings/Parts for Mazak SQT Toolholders



Bushings

Order No.	Description	
	OD	ID
075-BS312	3/4"	5/16"
075-BS375	3/4"	3/8"
075-BS500	3/4"	1/2"
075-BS625	3/4"	5/8"
100-BS312	1"	5/16"
100-BS375	1"	3/8"
100-BS500	1"	1/2"
100-BS625	1"	5/8"
100-BS750	1"	3/4"
110-BS312	1-1/4"	5/16"
110-BS375	1-1/4"	3/8"
110-BS500	1-1/4"	1/2"
110-BS625	1-1/4"	5/8"
110-BS750	1-1/4"	3/4"
110-BS1000	1-1/4"	1"
115-BS375	1-1/2"	3/8"
115-BS500	1-1/2"	1/2"
115-BS625	1-1/2"	5/8"
115-BS750	1-1/2"	3/4"
115-BS1000	1-1/2"	1"
115-BS1250	1-1/2"	1-1/4"
125-BS375	1-1/2"	3/8"
125-BS500	1-1/2"	1/2"
125-BS625	1-1/2"	5/8"
125-BS750	1-1/2"	3/4"
125-BS1000	1-1/2"	1"
125-BS1250	1-1/2"	1-1/4"
128-BS500	2"	1/2"
128-BS625	2"	5/8"
128-BS750	2"	3/4"
128-BS1000	2"	1"
128-BS1250	2"	1-1/4"
128-BS1750	2"	1-3/4"

Morse Taper Bushings

Order No.	Description	
	OD	M.T. No.
100-MT1	1"	1
100-MT2	1"	2
110-MT1	1-1/4"	1
110-MT2	1-1/4"	2
115-MT2	1-1/2"	2
115-MT3	1-1/2"	3
128-MT2	2"	2
128-MT3	2"	3
128-MT4	2"	4

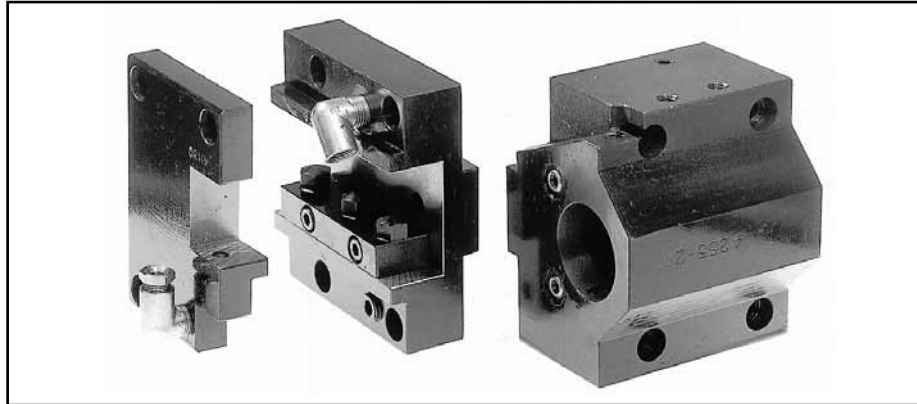
U-Drill Bushing

Order No.	Description	
	OD	ID
010-US20	32mm	20mm
010-US25	32mm	25mm
015-US20	40mm	20mm
015-US25	40mm	25mm
015-US32	40mm	32mm

Parts

Description	Mazak No.	Order No.
SQT10		
Shank	3518066490	010-SHK40
Diamond Locator	3468048090	010-DML40
Nozzles	E00PBA6E020	00PBA6E020
Screw - Short	1411539851	1411539851
Screw - Long	3468048320	3468048320
SQT15/18/200/250		
Shank	3518066490	010-SHK40
Diamond Locator	1578010821	015-DML40
Nozzles	E00PBA6E020	00PBA6E020
Screw - Short	1421538641	1421538641
Screw - Long	3478047980	3478047980
SQT28		
Shank	CTA5990	028-SHK40
Diamond Locator	1578010821	028-DML40
Nozzles	E00PBA6E020	00PBA6E020
Screw - Short	1421538641	1421538641
Screw - Long	3478047980	3478047980

Mazak Bolt-on Style Toolholders for Quick Turn (QT) Machines



QT15 8D/QT 250-12D		
PART NO.	MAZAK PART NO.	DESCRIPTION
QT15-BOH	53418010403	Boring Bar Holder (1.500")
QT15-FAH	53418010500	Facing Holder
QT15-FTH	53418010700	Forward Turning Holder
QT15-RTH	53418010800	Reverse Turning Holder
QT15-UDH	53418010600	U Drill Holder (40 mm)

QT200-12D		
PART NO.	MAZAK PART NO.	DESCRIPTION
QT200-BOH	53258010500	Boring Bar Holder (1.250")
QT200-FAH	53258010400	Facing Holder
QT200-FTH	53258010200	Forward Turning Holder
QT200-RTH	53258010300	Reverse Turning Holder

QT15-12D		
PART NO.	MAZAK PART NO.	DESCRIPTION
QT12-12FAH	53418010201	Facing Holder

QTN100/12 Position		
PART NO.	MAZAK PART NO.	DESCRIPTION
QTN100-BOH	53108010400	Boring Bar Holder (1.250")
QTN100-FAH	53108010300	Facing Holder
QTN100-FTH	53108010101	Forward Turning Holder
QTN100-RTH	53108010201	Reverse Turning Holder
QTN100-UDH	53108010500	U-Drill Holder (32mm)

QT15 8D-16 Position		
PART NO.	MAZAK PART NO.	DESCRIPTION
QT15-16BOH	53418014600	Boring Bar Holder (1.500")
QT15-16FAH	53418014800	Facing Holder
QT15-16FTH	53418015000	Forward Turning Holder
QT15-16UDH	53418015000	U-Drill Holder (40mm)

QTN 200/250/300/350		
PART NO.	MAZAK PART NO.	DESCRIPTION
QTN200-BOH	53378010302	Boring Bar Holder (1.250")
QTN350-BOH	MZK8007B	Boring Bar Holder (2.000")
QTN200-FAH	53418010500	Facing Holder
QTN350-FAH	53208010300	Facing Holder
QTN200-DTH	53208010400	Turning Holder (Forward/Reverse)
QTN200-UDH	53208010100	U-Drill Holder (32mm)

QT28 8D-16 Position / QT300		
PART NO.	MAZAK PART NO.	DESCRIPTION
QT28-BOH	53428004502	Boring Bar Holder (2.000")
QT28-FAH	53428004402	Facing Holder
QT28-FTH	53428004300	Forward Turning Holder
QT28-UDH	53428004701	U-Drill Holder (2.000")

QT350-12D		
PART NO.	MAZAK PART NO.	DESCRIPTION
QT350-BOH	51488000601	Boring Bar Holder (1.250")
QT350-OBOH	51488000701	Offset Boring Bar Holder
QT350-FAH	51488000900	Facing Holder
QT350-TTH	MZK7227B	Tandem Turn Holder
QT350-UDH	51488001000	U-Drill Holder (2.000")

The above is only an example of some of the toolholders we offer. Tools for other machine models are also available. Specials upon request. It is critical to verify the number of stations on your machine turret or provide the eleven digit Mazak part number to insure the correct holder is being provided.