

Machine Tool Cabinets



Drawer with Simple Runner

| Front Height | Usable Height | Depth | Storage Capacity KG | Order No. |
|--------------|---------------|-------|---------------------|------------|
| 45/45 | 30 | 28 | 60 | 1000-001xx |
| 60/60 | 45 | 40 | 60 | 1000-002xx |
| 75/75 | 60 | 51 | 80 | 1000-003xx |
| 90/90 | 75 | 65 | 100 | 1000-004xx |
| 105/90 | 90 | 65 | 100 | 1000-005xx |
| 120/120 | 105 | 95 | 100 | 1000-006xx |
| 150/150 | 135 | 125 | 100 | 1000-008xx |

A wide diversification of storage shelves to accommodate your individual needs



Drawer with Telescopic Runner

| Front Height | Usable Height | Depth | Storage Capacity KG | Order No. |
|--------------|---------------|-------|---------------------|------------|
| 75/75 | 55 | 51 | 200 | 1000-020xx |
| 90/90 | 70 | 65 | 200 | 1000-021xx |
| 105/90 | 85 | 65 | 200 | 1000-022xx |
| 120/120 | 100 | 95 | 200 | 1000-023xx |
| 150/150 | 130 | 125 | 200 | 1000-025xx |
| 180/150 | 105 | 125 | 200 | 1000-027xx |
| 210/210 | 135 | 185 | 200 | 1000-029xx |

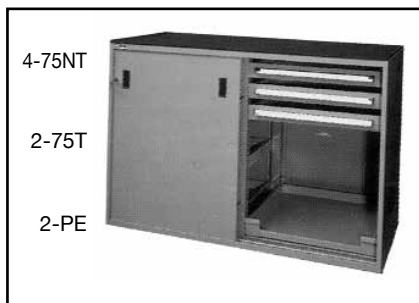
These cabinets, which have sliding doors, offer extra storage capacity in a smaller space.

The extractable shelf provides a safe storing platform for heavy equipment. One benefit of the full shelf extension is that deposit and retrieval of heavy items is made much easier. Dimensions: 1450 mm wide x 795 mm deep x 1022 mm high. Steel top has raised retaining edges on three sides and is fitted with a rubber mat. Height of top 22m



PE Open Front Drawer with Telescopic Runner

L1 1000-120xx

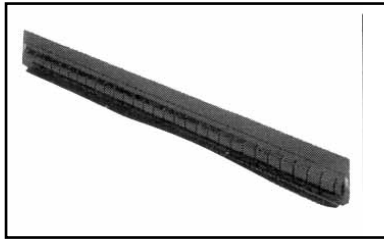


A063AS-02

6 drawers, 2 open-front drawers
1090-387xx

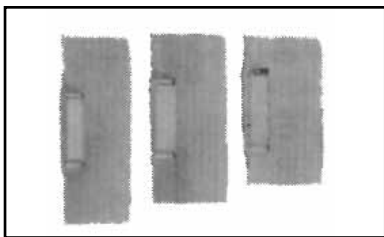
xx = 03 GREEN
04 LOBSTER ORANGE
12 LIGHT BLUE

Drawer Accessories



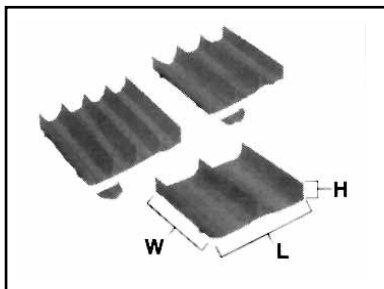
Moveable Slotted Walls

| Front Height | | Useful Height | | AO | SMS 3 | SMS 4 |
|--------------|-----|---------------|-----|------------|------------|------------|
| AO | SMS | AO | SMS | | | |
| 45 | - | 27 | - | 9910-00134 | - | - |
| 60 | - | 38 | - | 9910-00234 | - | - |
| 75 | 75 | 49 | 60 | 9910-00334 | 9900-00101 | 9916-00101 |
| 90-105 | 110 | 64 | 90 | 9910-00434 | 9900-00201 | 9916-00201 |
| 120-135 | - | 94 | - | 9910-00634 | - | - |
| 150-195 | 150 | 123 | 130 | 9910-00834 | 9900-00401 | 9916-00401 |
| 210-285 | - | 183 | - | 9910-01234 | - | - |
| 300-450 | - | 273 | - | 9910-01834 | - | - |



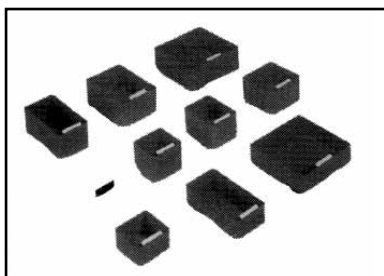
Dividers

| Front Height mm | Plate Height mm | Length mm | Position | | 4 | 5 | 6 | 7 | 8 | 9 | 10 | 11 |
|-----------------|-----------------|-----------|------------|------------|------------|------------|------------|------------|------------|------------|----|------------|
| | | | 76 | 96 | 116 | 136 | 156 | 176 | 196 | 216 | | |
| 45 | 22 | cod. | 0004-50419 | 0004-50519 | 0004-50619 | 0004-50719 | 0004-50819 | 0004-50919 | 0004-51019 | 0004-51119 | | |
| 60 | 37 | cod. | 0006-00419 | 0006-00519 | 0006-00619 | 0006-00719 | 0006-00819 | 0006-00919 | 0006-01019 | 0006-01119 | | |
| 75 | 45 | cod. | 0007-50419 | 0007-50519 | 0007-50619 | 0007-50719 | 0007-50819 | 0007-50919 | 0007-51019 | 0007-51119 | | |
| 90-105 | 60 | cod. | 0009-00419 | 0009-00519 | 0009-00619 | 0009-00719 | 0009-00819 | 0009-00919 | 0009-01019 | 0009-01119 | | 0009-01119 |
| 120 | 90 | cod. | 0012-00419 | 0012-00519 | 0012-00619 | 0012-00719 | 0012-00819 | 0012-00919 | 0012-01019 | 0012-01119 | | 0012-01119 |
| 150-180 | 120 | cod. | 0015-00419 | 0015-00519 | 0015-00619 | 0015-00719 | 0015-00819 | 0015-00919 | 0015-01019 | 0015-01119 | | 0015-01119 |
| 210-270 | 180 | cod. | - | 0021-00519 | 0021-00619 | 0021-00719 | 0021-00819 | 0021-00919 | 0021-01019 | 0021-01119 | | 0021-01119 |
| 300-450 | 270 | cod. | - | 0030-00519 | 0030-00619 | 0030-00719 | 0030-00819 | 0030-00919 | 0030-01019 | 0030-01119 | | 0030-01119 |



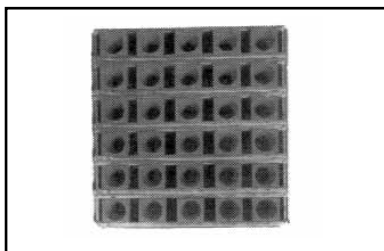
Plastic Groove Trays

| Size of Trays | 2 Rows | 3 Rows | 4 Rows |
|-------------------|------------|------------|------------|
| Width mm | 71 mm | 46 mm | 34 mm |
| Ø Max mm | 70 mm | 45 mm | 33 mm |
| L W H | | | |
| 150 x 75 x 28 mm | 9900-19718 | 9900-19818 | 9900-19918 |
| 150 x 100 x 28 mm | 9900-18918 | 9900-19018 | 9900-19118 |
| 150 x 150 x 28 mm | 9900-20118 | 9900-20218 | 9900-20318 |
| 100 x 100 x 28 mm | - | 9900-19318 | - |
| 100 x 150 x 28 mm | - | 9900-19218 | - |
| 75 x 100 x 28 mm | 9900-19418 | - | 9900-20018 |
| 75 x 150 x 28 mm | 9900-19618 | - | 9900-19918 |
| Dividers | 9900-20418 | 9900-20518 | 9900-20618 |



Plastic Boxes

| Model | Drawer | Length | Width | Height | Order No. |
|--------------|--------|--------|-------|--------|------------|
| Art 41 | 60/75 | 75 | 75 | 40 | 9900-00818 |
| Art 42 | 60/75 | 75 | 150 | 40 | 9900-00918 |
| Art 43 | 60/75 | 150 | 150 | 40 | 9900-01018 |
| Art 61 | 90 | 75 | 75 | 60 | 9900-01118 |
| Art 62 | 90 | 75 | 150 | 60 | 9900-01218 |
| Art 63 | 90 | 150 | 150 | 60 | 9900-01318 |
| Art 64 | 90 | 100 | 75 | 60 | 9900-07318 |
| Art 65 | 90 | 100 | 100 | 60 | 9900-07418 |
| Art 66 | 90 | 100 | 150 | 60 | 9900-07518 |
| Label Holder | - | - | - | - | 9900-01617 |



Adjustable Kits for Toolholders in Drawers

AO - Cabinets

| Model | Length | Width | Height | Order No. |
|------------|--------|-------|--------|------------|
| KIT 4 FILE | 618 | 618 | 150 | 1090-48834 |
| KIT 5 FILE | 618 | 618 | 150 | 1090-48934 |
| KIT 6 FILE | 618 | 618 | 150 | 1090-49034 |

To be used in 1000-025xx - 150T Drawer

SMS - Cabinets

| | | | | |
|---------|-----|-----|-----|------------|
| SMS 4/3 | 560 | 560 | 100 | 1190-20634 |
| SMS 4/4 | 560 | 560 | 100 | 1190-20734 |
| SMS 4/5 | 560 | 560 | 100 | 1190-20834 |

To be used in 1100-31401 SMS4 Empty Frame Drawer